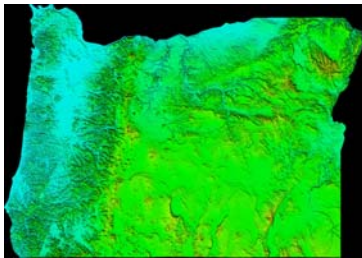


True Depth Projects

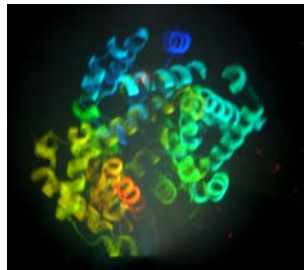
Mike Bailey

mjb@cs.oregonstate.edu

Purpose: Scientific and engineering visualization can be made more effective when the 3D information display can be “lifted” off the 2D flat monitor. I have always been fascinated with various ways to do this. Here are some we are using:



ChromaDepth "Stereo"



True 3D Display



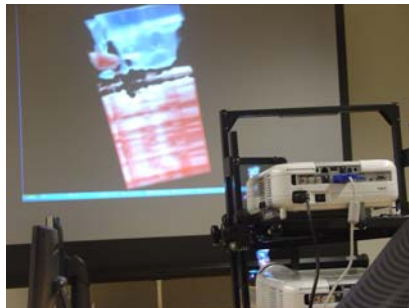
SynthaGram (lenticular) Stereo



3D Hardcopy



Mirror Stereo



Dual-projector Stereo



CrystalEyes Stereo



Custom Visualization View-Master Reels



Virtual Reality



Augmented Reality