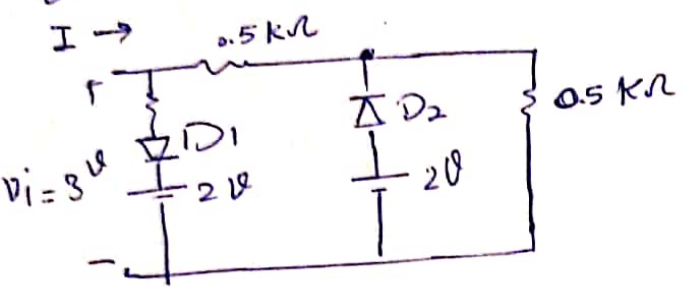
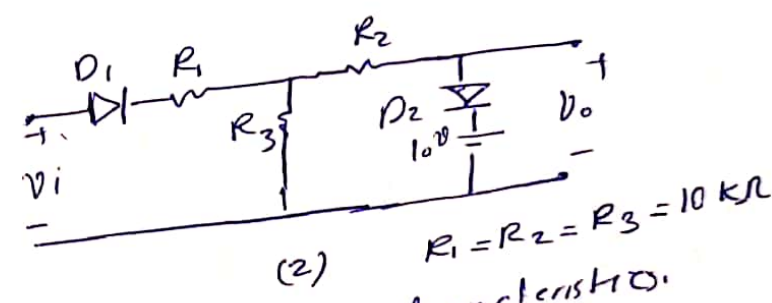
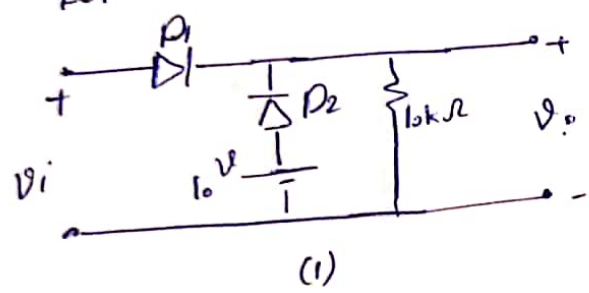


Quiz Questions.

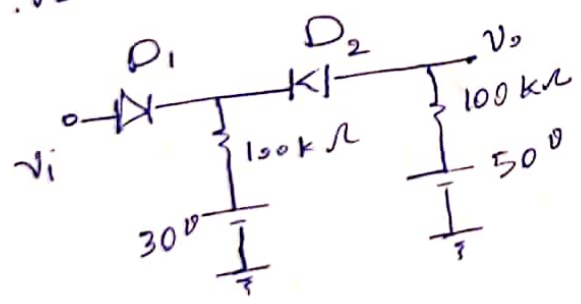
① Diodes are ideal. calculate I . ($V_i = 3V$)



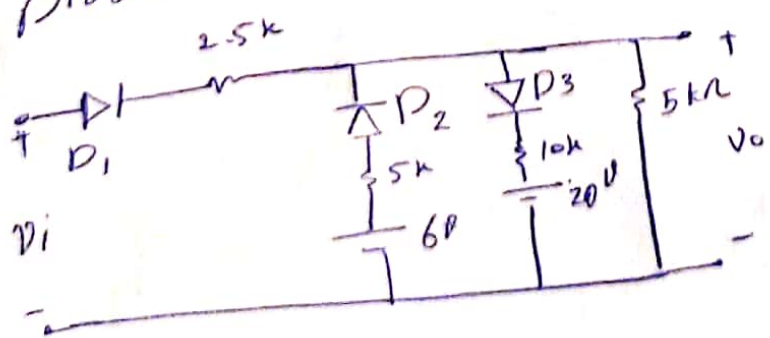
② Diodes are ideal, $V_i = 50\sin\omega t$. plot the output signal (V_o) for both circuits.



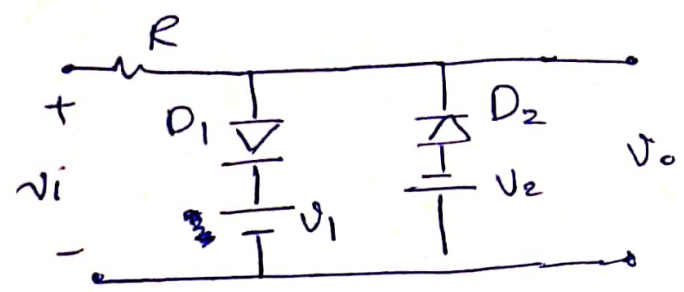
③ Diodes are ideal. Plot the transfer characteristic.



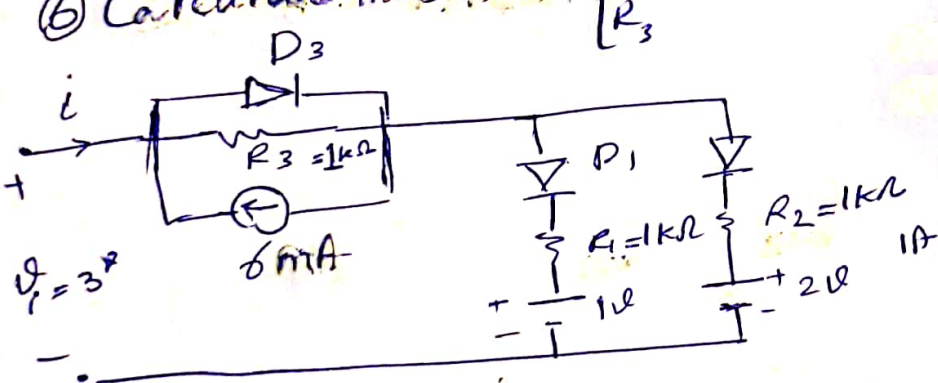
④ Diodes are ideal. Plot the transfer characteristic.



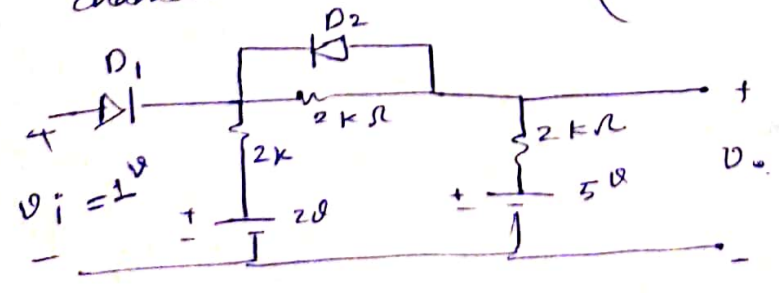
⑤ Diodes are ideal, plot the transfer characteristics.



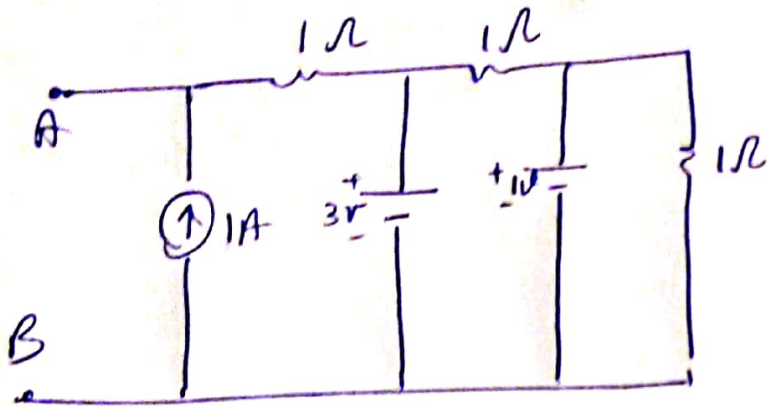
⑥ Calculate the current of $\begin{cases} R_1 \\ R_2 \\ R_3 \end{cases}$ (Diodes are ideal)



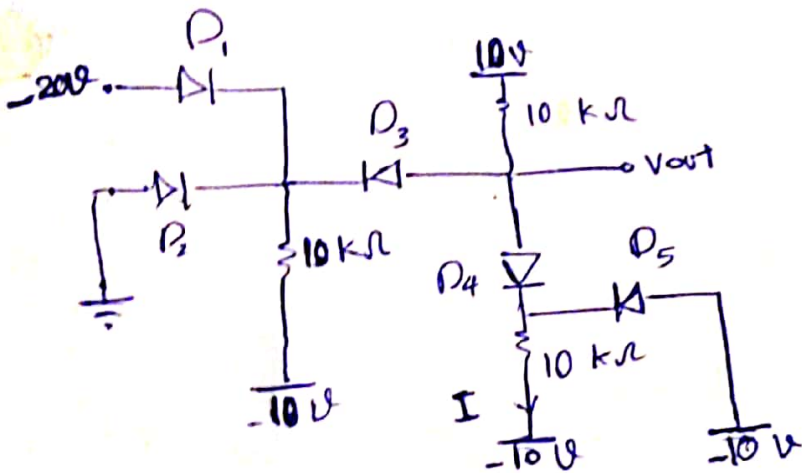
⑦ Diodes are ideal, calculate \$V_{out}\$ characteristic.



⑧ Calculate R_{th}



⑨ Calculate v_{out} ?



⑩ Calculate I in the question no. 9.