

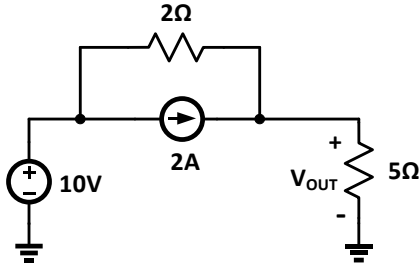
Duration: 20 minutes.

Good Luck!

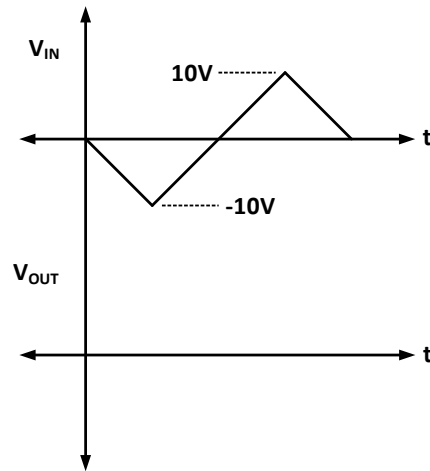
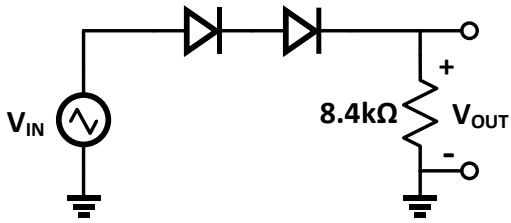
Name _____

Score _____

Q1 (10pts): Using the Thevenin's equivalent circuit, calculate the voltage across 5Ω resistor



Q2 (10pts): Assuming real diode, plot the voltage V_{OUT} . Note: in the forward bias region, the diode drop is $0.7V$.



Q3 (10pts): Assuming ideal diodes, calculate current I_1 and I_2 in diodes D_1 and D_2 .

