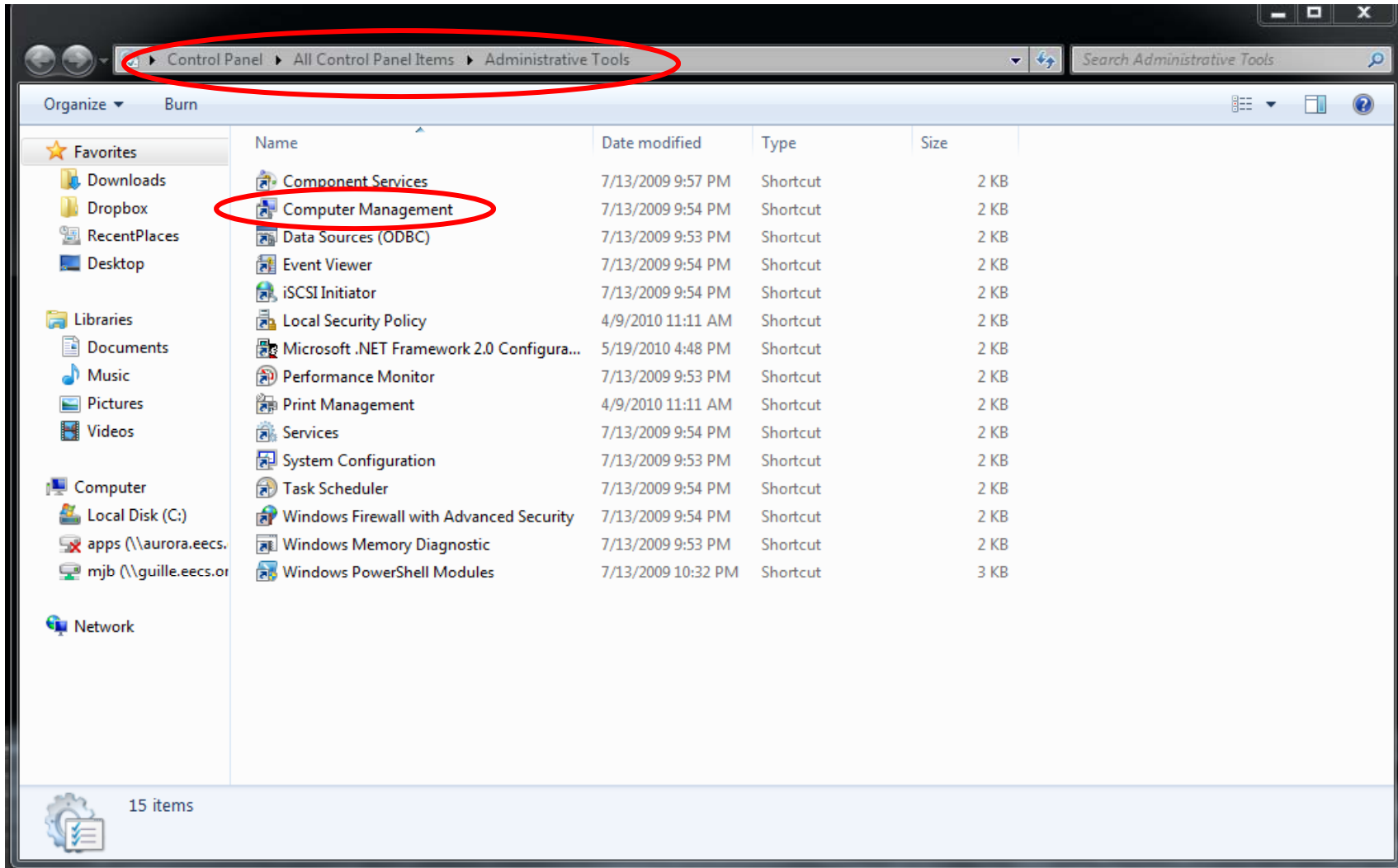
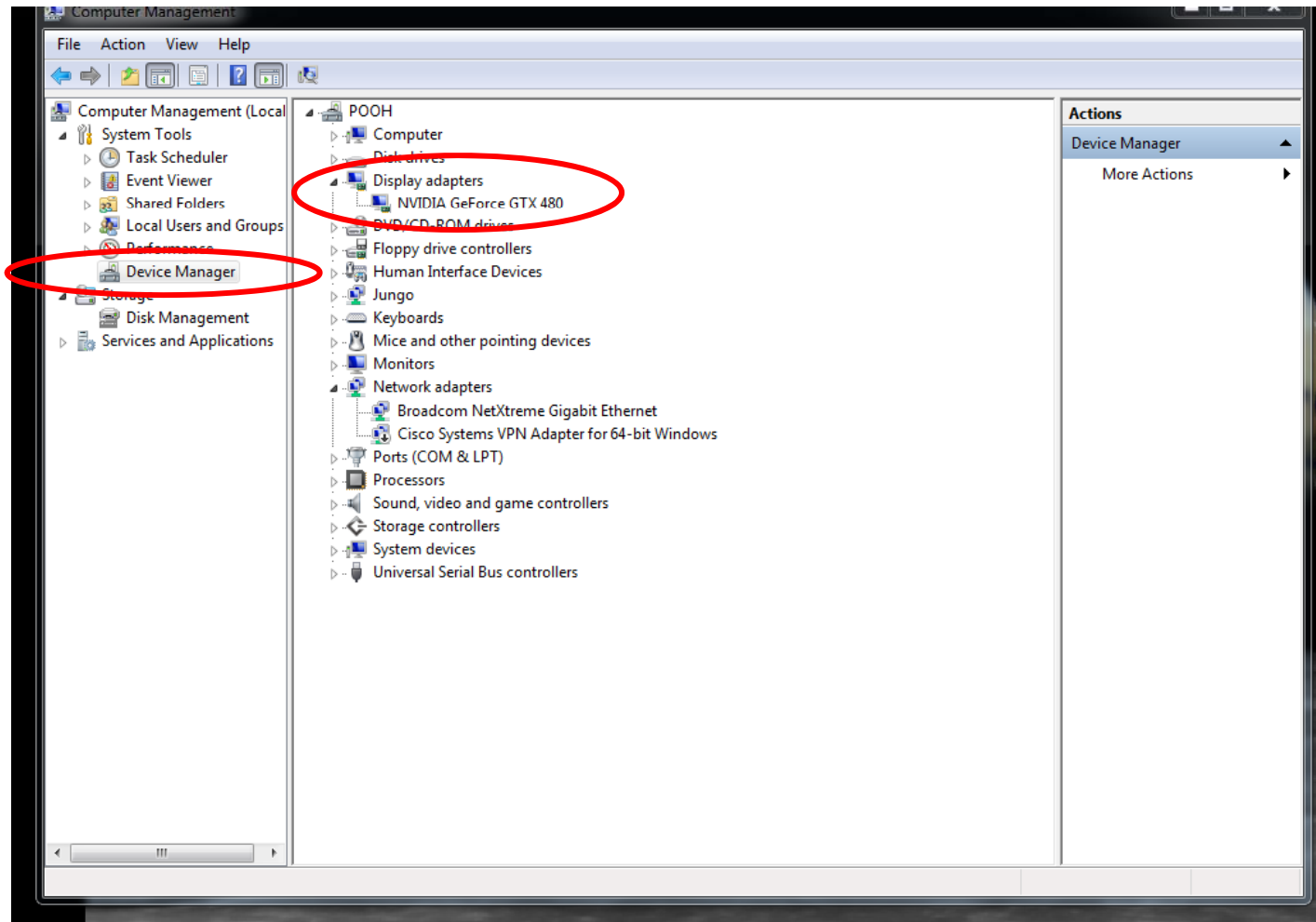


**How Do I Find Out if OpenCL is Installed on My Windows 7 System?**

1. Go to: **Start** → **Control Panel** → **Administrative Tools**
2. Double-click **Computer Management**



3. Click on **Device Manager**
4. Click open **Display Adapters**
5. Right-click on what you find there and select **Properties**



6. Click on **Driver**
7. Click the **Driver Details** button
8. Scroll down and see if **OpenCL** is installed

