

Lecture 12

Saturday, September 21, 2024 2:25 AM

Continuous function: continuity at one point, left continuity, right continuity, continuity on an interval, interval of continuity

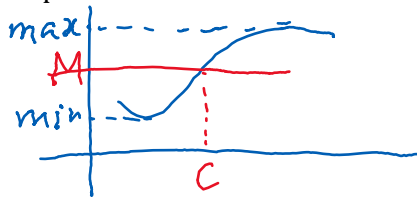
Type of discontinuity: jump, infinite, removable

Work on some examples on the worksheet

Intermediate value theorem

If f is continuous on $[a, b]$ and $\min_{[a,b]} f < M < \max_{[a,b]} f$ then there exists $c \in [a, b]$ such that $f(c) = M$.

Graphical interpretation:



We will work on Problem 2 on the worksheet next time.