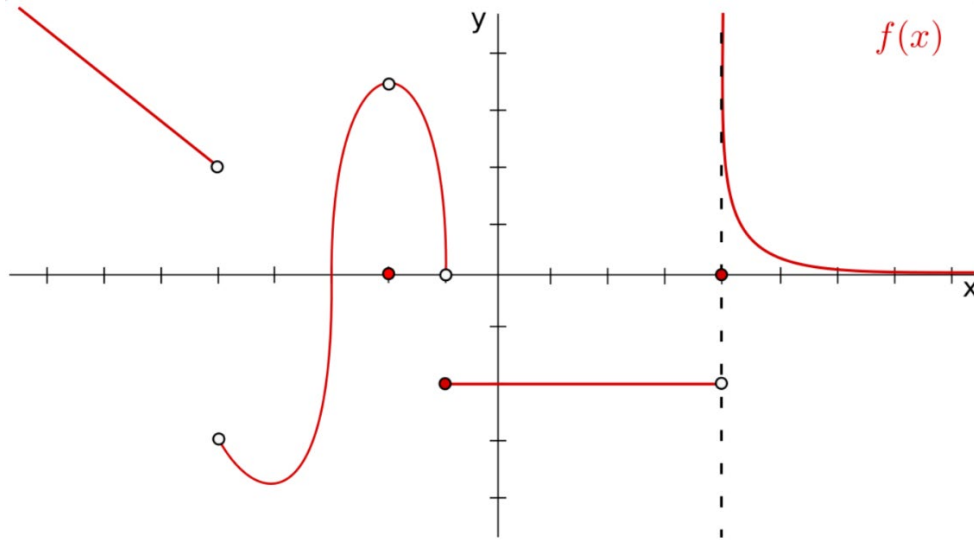


Worksheet 9/20/2024

1) The graph of a function $f(x)$ is given in the figure below. Where is the function discontinuous? Determine the type of discontinuity. Write the interval of continuity.



2) Explain why the following equation has 3 distinct solutions:

$$x^3 - 4x + 1 = 0$$

Use the bisection method with to approximate the largest solution with an allowable error of 0.1.