

Learning Over Dirty Data Without Cleaning

Jose Picado
Oregon State University
jpicado@gmail.com

Arash Termehchy
Oregon State University
termehca@oregonstate.edu

John Davis
Oregon State University
davisjo5@oregonstate.edu

Ga Young Lee
Oregon State University
leegay@oregonstate.edu

ABSTRACT

Real-world datasets are dirty and contain many errors. Examples of these issues are violations of integrity constraints, duplicates, and inconsistencies in representing data values and entities. Learning over dirty databases may result in inaccurate models. Users have to spend a great deal of time and effort to repair data errors and create a clean database for learning. Moreover, as the information required to repair these errors is not often available, there may be numerous possible clean versions for a dirty database. We propose *DLearn*, a novel relational learning system that learns directly over dirty databases effectively and efficiently without any preprocessing. *DLearn* leverages database constraints to learn accurate relational models over inconsistent and heterogeneous data. Its learned models represent patterns over all possible clean instances of the data in a usable form. Our empirical study indicates that *DLearn* learns accurate models over large real-world databases efficiently.

ACM Reference Format:

Jose Picado, John Davis, Arash Termehchy, and Ga Young Lee. 2020. Learning Over Dirty Data Without Cleaning. In *Proceedings of the 2020 ACM SIGMOD International Conference on Management of Data (SIGMOD'20)*, June 14–19, 2020, Portland, OR, USA. ACM, New York, NY, USA, 18 pages. <https://doi.org/10.1145/3318464.3389708>

1 INTRODUCTION

Users often would like to learn interesting relationships over relational databases [17, 19, 29, 36, 48, 54]. Consider the IMDb database (*imdb.com*) that contains information about movies whose schema fragments are shown in Table 1 (top). Given

Permission to make digital or hard copies of all or part of this work for personal or classroom use is granted without fee provided that copies are not made or distributed for profit or commercial advantage and that copies bear this notice and the full citation on the first page. Copyrights for components of this work owned by others than ACM must be honored. Abstracting with credit is permitted. To copy otherwise, or republish, to post on servers or to redistribute to lists, requires prior specific permission and/or a fee. Request permissions from permissions@acm.org.

SIGMOD'20, June 14–19, 2020, Portland, OR, USA

© 2020 Association for Computing Machinery.

ACM ISBN 978-1-4503-6735-6/20/06...\$15.00

<https://doi.org/10.1145/3318464.3389708>

this database and some training examples, a user may want to learn a new relation *highGrossing(title)*, which indicates that the movie with a given title is high grossing. Given a relational database and training examples for a new relation, *relational machine learning* (relational learning) algorithms learn (approximate) relational models and definitions of the target relation in terms of existing relations in the database [17, 29, 42, 45, 47, 50]. For instance, the user may provide a set of high grossing movies as positive examples and a set of low grossing movies as negative examples to a relational learning algorithm. Given the IMDb database and these examples, the algorithm may learn:

$$\begin{aligned} \text{highGrossing}(x) \leftarrow & \text{movies}(y, x, z), \text{mov2genres}(y, \text{'comedy'}), \\ & \text{mov2releasedate}(y, \text{'May'}, u), \end{aligned}$$

which indicates that high grossing movies are often released in May and their genre is *comedy*. One may assign weights to these definitions to describe their prevalence in the data according to their training accuracy [36, 50]. As opposed to other machine learning algorithms, relational learning methods do not require the data points to be statistically independent and follow the same identical distribution (IID) [19]. Since a relational database usually contains information about multiple types of entities, the relationships between these entities often violate the IID assumption. Also, the data about each type of entities may follow a distinct distribution. This also holds if one wants to learn over the data gathered from multiple data sources as each data source may have a distinct data distribution. Thus, using other learning methods on these databases results in biased and inaccurate models [19, 36, 48]. Since relational learning algorithms leverage the structure of the database directly to learn new relations, they do not need the tedious process of feature engineering. In fact, they are used to discover features for the downstream non-relational models [40]. Thus, they have been widely used over relational data, e.g., building usable query interfaces [3, 35, 41], information extraction [19, 36], and entity resolution [21].

Real-world databases often contain inconsistencies [10, 15, 18, 23, 24, 28, 53], which may prevent the relational learning algorithms from finding an accurate definition. In particular, the information in a domain is sometimes spread across

Table 1: Schema fragments for the IMDb and BOM.

IMDb	
movies(id, title, year)	mov2countries(id, name)
mov2genres(id, name)	mov2releasedate(id, month, year)
BOM	
mov2totalGross(title, gross)	
highBudgetMovies(title)	

several databases. For example, IMDb does *not* contain the information about the budget or total grossing of movies. This information is available in another database called Box Office Mojo (BOM) (*boxofficemojo.com*), for which schema fragments are shown in Table 1 (bottom). To learn an accurate definition for *highGrossing*, the user has to collect data from the BOM database. However, the same entity or value may be represented in various forms in the original databases, e.g., the *titles* of the same movie in IMDb and BOM have different formats, e.g., the title of the movie *Star Wars: Episode IV* is represented in IMDb as *Star Wars: Episode IV - 1977* and in BOM as *Star Wars - IV*. A single database may also contain these type of heterogeneity as a relation may have duplicate tuples for the same entity, e.g., duplicate tuples for the same movie in BOM. A database may have other types of inconsistencies that violate the integrity of the data. For example, a movie in IMDb may have two different production years [15, 23, 53].

Users have to resolve inconsistencies and learn over the repaired database, which is very difficult and time-consuming for large databases [18, 28]. Repairing inconsistencies usually leads to numerous clean instances as the information about the correct fixes is not often available [10, 13, 24]. An entity may match and be a potential duplicate of multiple distinct entities in the database. For example, title *Star Wars* may match both titles *Star Wars: Episode IV - 1977* and *Star Wars: Episode III - 2005*. Since we know that the *Star Wars: Episode IV - 1977* and *Star Wars: Episode III - 2005* refer to two different movies, the title *Star Wars* must be unified with only one of them. For each choice, the user ends up with a distinct database instance. Since a large database may have many possible matches, the number of clean database instances will be enormous. Similarly, it is not often clear how to resolve data integrity violations. For instance, if a movie has multiple production years, one may not know which year is correct. Due to the sheer number of volumes, it is not possible to generate and materialize all clean instances for a large dirty database [23]. Cleaning systems usually produce a subset of all clean instances, e.g., the ones that differ minimally with the original data [23]. This approach still generates many repaired databases [10, 23, 53]. It is also shown that these conditions may not produce the correct instances [34]. Thus, the cleaning process may result in many instances where it is not clear which one to use for learning. It takes a great

deal of time for users to manage these instances and decide which one(s) to use for learning. Most data scientists spend more than 80% of their time on such cleaning tasks [39].

Some systems aim at producing a single probabilistic database that contain information about a subset of possible clean instances [49]. These systems, however, do not address the problem of duplicates and value heterogeneities as they assume that there always is a reliable table, akin to a dictionary, which gives the unique value that should replace each potential duplicate in the database. However, given that different values represent the same entity, it is *not* clear what should replace the final value in the clean database, e.g., whether *Star War* represents *Star Wars: Episode IV - 1977* or *Star Wars: Episode III - 2005*. They also allow violations of integrity constraints to generate the final probabilistic database efficiently, which may lead to inconsistent repairs. Moreover, to restrict the set of clean instances, they require attributes to have finite domains that does not generally hold in practice.

We propose a novel learning method that learns directly over dirty databases without materializing its clean versions, thus, it substantially reduces the effort needed to learn over dirty. The properties of clean data are usually expressed using declarative data constraints, e.g., functional dependencies, [1, 2, 7, 13, 14, 22–24, 26, 49]. Our system uses the declarative constraints during learning. These constraints may be provided by users or discovered from the data using profiling techniques [1, 38]. Our contributions are as follows:

- We introduce and formalize the problem of learning over an inconsistent database (Section 3).
- We propose a novel relational learning algorithm called *DLearn* to learn over inconsistent data (Section 4).
- Every learning algorithm chooses the final result based on its coverage of the training data. We propose an efficient method to compute the coverage of a definition directly over the heterogeneous database (Section 4.2).
- We provide an efficient implementation of *DLearn* over a relational database system (Section 5).
- We perform an extensive empirical study over real-world datasets and show that *DLearn* scales to and learns efficiently and effectively over large data.

2 BACKGROUND

2.1 Relational Learning

In this section, we review the basic concepts of relational learning over databases without any heterogeneity [17, 29]. We fix two mutually exclusive sets of relation and attribute symbols. A database schema \mathcal{S} is a finite set of relation symbols R_i , $1 \leq i \leq n$. Each relation R_i is associated with a set of attribute symbols denoted as $R_i(A_1, \dots, A_m)$. We denote the domain of values for attribute A as $dom(A)$. Each database instance I of schema \mathcal{S} maps a finite set of tuples to every

relation R_i in \mathcal{S} . Each tuple t is a function that maps each attribute symbol in R_i to a value from its domain. We denote the value of the set of attributes X of tuple t in the database I by $t^I[X]$ or $t[X]$ if I is clear from the context. Also, when it is clear from the context, we refer to an instance of a relation R simply as R . An *atom* is a formula in the form of $R(u_1, \dots, u_n)$, where R is a relation symbol and u_1, \dots, u_n are *terms*. Each term is either a variable or a constant, i.e., value. A *ground atom* is an atom that only contains constants. A *literal* is an atom, or the negation of an atom. A *Horn clause* (clause for short) is a finite set of literals that contains exactly one positive literal. A *ground clause* is a clause that only contains ground atoms. Horn clauses are also called Datalog rules (without negation) or conjunctive queries. A *Horn definition* is a set of Horn clauses with the same positive literal, i.e., non-recursive Datalog program or union of conjunctive queries. Each literal in the body is *head-connected* if it has a variable shared with the head literal or another head-connected literal.

Relational learning algorithms learn first-order logic definitions from an input relational database and training examples. Training examples E are usually tuples of a single *target relation*, and express positive (E^+) or negative (E^-) examples. The input relational database is also called *background knowledge*. The *hypothesis space* is the set of all possible first-order logic definitions that the algorithm can explore. It is usually restricted to Horn definitions to keep learning efficient. Each member of the hypothesis space is a *hypothesis*. Clause C covers an example e if $I \wedge C \models e$, where \models is the entailment operator, i.e., if I and C are true, then e is true. Definition H covers an example e if at least one its clauses covers e . The goal of a learning algorithm is to find the definition in the hypothesis space that covers all positive and the fewest negative examples as possible.

EXAMPLE 2.1. *IMDb contains the tuples movie(10, 'Star Wars: Episode IV - 1977', 1977), mov2genres(10, 'comedy'), and mov2releasedate(10, 'May', 1977). Therefore, the definition that indicates that high grossing movies are often released in May and their genre is comedy shown in Section 1 covers the positive example highGrossing('Star Wars: Episode IV - 1977').*

Most relational learning algorithms follow a covering approach illustrated in Algorithm 1 [42, 45–47, 54]. The algorithm constructs one clause at a time using the *LearnClause* function. If the clause satisfies a criterion, e.g., covers at least a certain fraction of the positive examples and does *not* cover more than a certain fraction of negative ones, the algorithm adds the clause to the learned definition and discards the positive examples covered by the clause. It stops when all positive examples are covered by the learned definition.

Algorithm 1: Covering approach algorithm.

Input : Database instance I , examples E

Output : Horn definition H

```

1  $H = \{\}$ 
2  $U = E^+$ 
3 while  $U$  is not empty do
4    $C = \text{LearnClause}(I, U, E^-)$ 
5   if  $C$  satisfies minimum criterion then
6      $H = H \cup C$ 
7      $U = U - \{e \in U \mid H \wedge I \models e\}$ 
8 return  $H$ 

```

2.2 Matching Dependencies

Learning over databases with heterogeneity in representing values may deliver inaccurate answers as the same entities and values may be represented under different names. Thus, one must resolve these representational differences to produce a high-quality database to learn an effective definition. The database community has proposed declarative matching and resolution rules to express the domain knowledge about matching and resolution [5, 7, 9, 13, 24, 26, 32, 33, 51]. *Matching dependencies (MD)* are a popular type of such declarative rules, which provide a powerful method of expressing domain knowledge on matching values [8, 10, 23, 24, 38]. Let \mathcal{S} be the schema of the original database and R_1 and R_2 two distinct relations in \mathcal{S} . Attributes A_1 and A_2 from relations R_1 and R_2 , respectively, are comparable if they share the same domain. MD σ is a sentence of the form $R_1[A_1] \approx_{\text{dom}(A_1)} R_2[B_1], \dots, R_1[A_n] \approx_{\text{dom}(A_n)} R_2[B_n] \rightarrow R_1[C_1] \Leftrightarrow R_2[D_1], \dots, R_1[C_m] \Leftrightarrow R_2[D_m]$, where A_i and C_j are comparable to B_i and D_j , respectively, $1 \leq i \leq n$, and $1 \leq j \leq m$. Operation \approx_d is a similarity operator defined over domain d and $R_1[C_j] \Leftrightarrow R_2[D_j], 1 \leq j \leq m$, indicates that the values of $R_1[C_j]$ and $R_2[D_j]$ refer to the same value, i.e., are interchangeable. Intuitively, the aforementioned MD says that if the values of $R_1[A_i]$ and $R_2[B_i]$ are sufficiently similar, the values of $R_1[C_j]$ and $R_2[D_j]$ are different representations of the same value. For example, consider again the database that contains relations from *IMDb* and *BOM* whose schema fragments are shown in Table 1. According to our discussion in Section 1, one can define the following MD σ_1 : $\text{movies}[\text{title}] \approx \text{highBudgetMovies}[\text{title}] \rightarrow \text{movies}[\text{title}] \Leftrightarrow \text{highBudgetMovies}[\text{title}]$. The exact implementation of the similarity operator depends on the underlying domains of attributes. Our results are orthogonal to the implementation details of the similarity operator. In the rest of the paper, we use \approx_d operation only between comparable attributes. For brevity, we eliminate the domain d from \approx_d when it is clear from the context or the results hold for any domain d . We also denote $R_1[A_1] \approx R_2[B_1], \dots,$

$R_1[A_n] \approx R_2[B_n]$ in an MD as $R_1[A_{1\dots n}] \approx R_2[B_{1\dots n}]$. An MD $R_1[A_{1\dots n}] \approx R_2[B_{1\dots n}] \rightarrow R_1[C_1] \Leftrightarrow R_2[D_1], \dots, R_1[C_m] \Leftrightarrow R_2[D_m]$ is equivalent to a set of MDs $R_1[A_{1\dots n}] \approx R_2[B_{1\dots n}] \rightarrow R_1[C_1] \Leftrightarrow R_2[D_1], R_1[A_{1\dots n}] \approx R_2[B_{1\dots n}] \rightarrow R_1[C_2] \Leftrightarrow R_2[D_2], \dots, R_1[A_{1\dots n}] \approx R_2[B_{1\dots n}] \rightarrow R_1[C_m] \Leftrightarrow R_2[D_m]$. Thus, for the rest of the paper, we assume that each MD is in the form of $R_1[A_{1\dots n}] \approx R_2[B_{1\dots n}] \rightarrow R_1[C] \Leftrightarrow R_2[D]$, where C and D are comparable attributes of R_1 and R_2 , respectively. Given a database with MDs, one must enforce the MDs to generate a high-quality database. Let tuples t_1 and t_2 belong to R_1 and R_2 in database I of schema S , respectively, such that $t_1^I[A_i] \approx t_2^I[B_i]$, $1 \leq i \leq n$, denoted as $t_1^I[A_{1\dots n}] \approx t_2^I[B_{1\dots n}]$ for brevity. To enforce the MD $\sigma : R_1[A_{1\dots n}] \approx R_2[B_{1\dots n}] \rightarrow R_1[C] \Leftrightarrow R_2[D]$ on I , one must make the values of $t_1^I[C]$ and $t_2^I[D]$ identical as they actually refer to the same value [10, 24]. For example, if attributes C and D contain titles of movies, one unifies both values *Star Wars - 1977* and *Star Wars - IV to Star Wars Episode IV - 1977* as it deems this value as the one to which $t_1^I[C]$ and $t_2^I[D]$ refer. The following definition formalizes the concept of applying an MD to the tuples t_1 and t_2 on I .

DEFINITION 2.2. *Database I' is the immediate result of enforcing MD σ on t_1 and t_2 in I , denoted by $(I, I')_{[t_1, t_2]} \models \sigma$ if*

- (1) $t_1^I[A_{1\dots n}] \approx t_2^I[B_{1\dots n}]$, but $t_1^I[C] \neq t_2^I[D]$;
- (2) $t_1^{I'}[C] = t_2^{I'}[D]$; and
- (3) I and I' agree on every other tuple and attribute value.

One may define a unification function over some domains to map the values that refer to the same value to the correct value in the cleaned instance. It is, however, usually difficult to define such a function due to the lack of knowledge about the correct value. For example, let C and D in Definition 2.2 contain information about names of people and $t_1^I[C]$ and $t_2^I[D]$ have values *Jon Smith* and *Jon Sm*, respectively, which according to an MD refer to the same actual name, which is *Jon Smith*. It is not clear how to compute *Jon Smith* using the values of $t_1^I[C]$ and $t_2^I[D]$. We know that the values of $t_1^{I'}[C]$ and $t_2^{I'}[D]$ will be identical after enforcing σ , but we do not usually know their exact values. Because we aim at developing learning algorithms that are efficient and effective over databases from various domains, we do *not* fix any matching method in this paper. We assume that matching every pair of values a and b in the database creates a fresh value denoted as $v_{a,b}$.

Given the database I with the set of MDs Σ , I' is *stable* if $(I, I')_{[t_1, t_2]} \models \sigma$ for all $\sigma \in \Sigma$ and all tuples $t_1, t_2 \in I'$. In a stable database instance, all values that represent the same data item according to the database MDs are assigned equal values. Thus, it does not have any heterogeneities. Given a database I with set of MDs Σ , one can produce a stable instance for

I by starting from I and iteratively applying each MD in Σ according to Definition 2.2 finitely many times [10, 24]. Let I, I_1, \dots, I_k denote the sequence of databases produced by applying MDs according to Definition 2.2 starting from I such that I_k is stable. We say that (I, I_k) satisfy Σ and denote it as $(I, I_k) \models \Sigma$. A database may have many stable instances depending on the order of MD applications [10, 24].

EXAMPLE 2.3. *Let $(10, \text{'Star Wars: Episode IV - 1977', 1977})$ and $(40, \text{'Star Wars: Episode III - 2005', 2005})$ be tuples in relation *movies* and ('Star Wars') be a tuple in relation *highBudgetMovies* whose schemas are shown in Table 1. Consider MD $\sigma_1 : \text{movies}[\text{title}] \approx \text{highBudgetMovies}[\text{title}] \rightarrow \text{movies}[\text{title}] \Leftrightarrow \text{highBudgetMovies}[\text{title}]$. Let $\text{'Star Wars: Episode IV - 1977'}$ \approx 'Star Wars' and $\text{'Star Wars: Episode III - 2005'}$ \approx 'Star Wars' be true. Since the movies with titles $\text{'Star Wars: Episode IV - 1977'}$ and $\text{'Star Wars: Episode III - 2005'}$ are different movies with distinct titles, one can unify the title in the tuple ('Star Wars') in *highBudgetMovies* with only one of them in each stable instance. Each alternative leads to a distinct instance.*

MDs may *not* have perfect precision. If two values are declared similar according to an MD, it does not mean that they represent the same real-world entities. But, it is more likely for them to represent the same value than the ones that do not match an MD. Since it may be cumbersome to develop complex MDs that are sufficiently accurate, researchers have proposed systems that automatically discover MDs from the database content [38].

2.3 Conditional Functional Dependencies

Users usually define integrity constraints (IC) to ensure the quality of the data. Conditional functional dependencies (CDF) have been useful in defining quality rules for cleaning data [15, 22, 23, 30, 53, 53]. They extend functional dependencies, which are arguably the most widely used ICs [27]. Relation R with sets of attributes X and Y satisfies FD $X \rightarrow Y$ if every pairs of tuples in R that agree on the values of X will also agree on the values of Y . A CFD ϕ over R is a form $(X \rightarrow Y, t_p)$ where $X \rightarrow Y$ is an FD over R and t_p is a tuple pattern over $X \cup Y$. For each attribute $A \in X \cup Y$, $t_p[A]$ is either a constant in domain of A or an unnamed variable denoted as $'-'$ that takes values from the domain of A . The attributes in X and Y are separated by $||$ in t_p . For example, consider relation *mov2locale(title, language, country)* in BOM. The CFD $\phi_1 : (\text{title, language} \rightarrow \text{country}, (-, \text{English} || -))$ indicates that *title* uniquely identifies *country* for tuples whose language is English. Let \approx be a predicate over data values and unnamed variable $'-'$, where $a \approx b$ if either $a = b$ or a is a value and b is $'-'$. The predicate \approx naturally extends to tuples, e.g., $(\text{'Bait', English, USA}) \approx (\text{'Bait', -, USA})$. Tuple t_1 matches t_2 if $t_1 \approx t_2$. Relation R satisfies the CFD $(X \rightarrow Y, t_p)$ iff for each pair of tuples t_1, t_2 in the instance if $t_1[X] = t_2[X]$

$\succ t_p[X]$, then $t_1[Y] = t_2[Y] \succ t_p[Y]$. In other words, if $t_1[X]$ and $t_2[X]$ are equal and match pattern $t_p[X]$, $t_1[Y]$ and $t_2[Y]$ are equal and match $t_p[Y]$. A relation satisfies a set of CFDs Φ , if it satisfies every CFD in Φ . For each set of CFDs Φ , we can find an equivalent set of CFDs whose members have a single attribute on their right-hand side [15, 23, 53]. For the rest of the paper, we assume that each CFD has a single attribute on its right-hand side.

CFDs may be violated in real-world and heterogeneous datasets [30, 53]. For example, the pair of tuples r_1 :('Bait', English, USA) and r_2 :('Bait', English, Ireland) in *movie2locale* violate ϕ_1 . One can use attribute value modifications to repair violations of a CFD in a relation and generate a repaired relation that satisfy the CFD [11, 15, 23, 25, 37, 52, 53]. For instance, one may repair the violation of ϕ_1 in r_1 and r_2 by updating the value of title or language in one of the tuples to value other than Bait or English, respectively. One may also repair this violation by replacing the countries in these tuples with the same value. Inserting new tuples do not repair CFD violations and one may simulate tuple deletion using value modifications. Moreover, removing tuples leads to unnecessary loss of information for attributes that do not participate in the CFD. Modifying attribute values is also sufficient to resolve CFD violations [15, 53]. Thus, given a pair of tuples t_1 and t_2 in R that violate CFD $(X \rightarrow A, t_p)$, to resolve the violation, one must either modify $t_1[A]$ (resp. $t_2[A]$) such that $t_1[A] = t_2[A]$ and $t_1[A] \succ t_p[A]$, update $t_1[X]$ (resp. $t_2[X]$) such that $t_1[X] \neq t_p[X]$ (resp. $t_2[X] \neq t_p[X]$) or $t_1[X] \neq t_2[X]$. Let R be a relation that violates CFD ϕ . Each updated instance of R that is generated by applying the aforementioned repair operations and does not contain any violation of ϕ is a *repair* of R . As there are multiple fixes for each violation, there may be many repairs for each relation.

As opposed to FDs, a set of CFDs may be inconsistent, i.e., there is not any non-empty database that satisfies them [12, 15, 23, 53]. For example, the CFDs $(A \rightarrow B, a_1 || b_1)$ and $(B \rightarrow A, b_1 || a_2)$ over relation $R(A, B)$ cannot be both satisfied by any non-empty instance of R . The set of CFDs used in cleaning is consistent [12, 15, 23, 53]. We refer the reader to [12] for algorithms to detect inconsistent CFDs.

3 SEMANTIC OF LEARNING

3.1 Different Approaches

Let I be an instance of schema \mathcal{S} with MDs Σ that violate some CFDs Φ . A *repair* of I is a stable instance of I that satisfy Φ . The values in I are repaired to satisfy Φ using the method explained in Section 2.3. Given I and a set of training examples E , we wish to learn a definition for a target relation T in terms of the relations in \mathcal{S} . Obviously, one may not learn an accurate definition by applying current learning algorithms over I as the algorithm may consider

different occurrences of the same value to be distinct or learn patterns that are induced based on tuples that violate CFDs. One can learn definitions by generating all possible repairs of I , learning a definition over each repair separately, and computing a union (disjunction) of all learned definitions. Since the discrepancies are resolved in repaired instances, this approach may learn accurate definitions.

However, this method is neither desirable nor feasible for large databases. As a large database may have numerous repairs, it takes a great deal of time and storage to compute and materialize all of them. Moreover, we have to run the learning algorithm once for each repair, which may take an extremely long time. More importantly, as the learning has been done separately over each repair, it is *not* clear whether the final definition is sufficiently effective considering the information of all stable instances. For example, let database I have two repairs I_1^s and I_2^s over which the aforementioned approach learns definitions H_1 and H_2 , respectively. H_1 and H_2 must cover a relatively small number of negative examples over I_1^s and I_2^s , respectively. However, H_1 and H_2 may cover a lot of negative examples over I_2^s and I_1^s , respectively. Thus, the disjunction of H_1 and H_2 will *not be effective* considering the information in both I_1^s and I_2^s . Hence, it is not clear whether the disjunction of H_1 and H_2 is the definition that covers all positive and the least negative examples over I_2^s and I_1^s . Also, it is not clear how to encode usably the final result as we may end up with numerous definitions.

Another approach is to consider only the information shared among all repairs for learning. The resulting definition will cover all positive and the least negative examples considering the information common among all repaired instances. This idea has been used in the context of query answering over inconsistent data, i.e., consistent query answering [6, 10]. However, this approach may lead to ignoring many positive and negative examples as their connections to other relations in the database may *not* be present in all stable instances. For example, consider the tuples in relations *movies* and *highBudgetMovies* in Example 2.3. The training example ('*Star Wars*') has different values in different stable instances of the database, therefore, it will be ignored. It will also be connected to two distinct movies with vastly different properties in each instance. Similarly, repairing the instance to satisfy the violated CFDs may further reduce the amount of training examples shared among all repairs. The training examples are usually costly to obtain and the lack of enough training examples may results in inaccurate learned definitions. Because in a sufficiently heterogeneous database, most positive and negative examples may not be common among all repairs, the learning algorithm may learn an inaccurate or simply an empty definition.

Thus, we hit a middle-ground. We follow the approach of learning directly over the original database. But, we also

give the language of definitions and semantic of learning enough flexibility to take advantage of as much (training) information as possible. Each definition will be a compact representation of a set of definitions, each of which is sufficiently accurate over some repairs. If one increases the expressivity of the language, learning and checking coverage for each clause may become inefficient [20]. We ensure that the added capability to the language of definitions is minimal so learning remains efficient.

3.2 Heterogeneity in Definitions

We represent the heterogeneity of the underlying data in the language of the learned definitions. Each new definition encapsulates the definitions learned over the repairs of the underlying database. Thus, we add the similarity operation, $x \approx y$, to the language of Horn definitions. We also add a set of new (built-in) relation symbols V_c with arity two called *repair relations* to the set of relation symbols used by the Datalog definitions over schema S . A literal with a repair relation symbol is a *repair literal*. Each repair literal $V_c(x, v_x)$ in a definition H represents replacing the variable (or constant) x in (other) existing literals in H with variable v_x if condition c holds. Condition c is a conjunction of $=$, \neq , and \approx relations over the variables and constants in the clause. Each repair literal reflects a repair operation explained in Sections 2.2 and 2.3 for an MD or violated CFD over the underlying database. The condition c is computed according to the corresponding MD or CFD. Finally, we add a set of literals with $=$, \neq , and \approx relations called *restriction literals* to establish the relationship between the replacement variables, e.g. v_x , according to the corresponding MDs and CFDs. Consider again the database created by integrating IMDb and BOM datasets, whose schema fragments are in Table 1, with MD $\sigma_1 : \text{movies}[\text{title}] \approx \text{highBudgetMovies}[\text{title}] \rightarrow \text{movies}[\text{title}] \approx \text{highBudgetMovies}[\text{title}]$. We may learn the following definition for the target relation *highGrossing*.

$$\begin{aligned} \text{highGrossing}(x) \leftarrow & \text{movies}(y, t, z), \text{mov2genres}(y, \text{'comedy'}), \\ & \text{highBudgetMovies}(x), x \approx t, V_{x \approx t}(x, v_x), \\ & V_{x \approx t}(t, v_t), v_x = v_t. \end{aligned}$$

The repair literals $V_{x \approx t}(x, v_x)$ and $V_{x \approx t}(t, v_t)$ represent the repairs applied to x and t to unify their values to a new one according to σ_1 . We add equality literal $v_x = v_t$ to restrict the replacements according to the corresponding MD.

We also use repair literals to fix a violation of a CFD in a clause. These repair literals reflect the operations explained in Section 2.3 to fix the violation of a CFD in a relation. The resulting clause represents possible repairs for a violation of a CFD in the clause. A variable may appear in multiple literals in the body of a clause and some repairs may modify only some of the occurrences of the variable, e.g., the example

on BOM database in Section 2.3. Thus, before adding repair literals for both MDs and CFDs, we replace each occurrence of a variable with a fresh one and add equality literals, i.e., *induced equality literals*, to maintain the connection between their replacements. Similarly, we replace each occurrence of the constant with a fresh variable and use equality literals to set the value the variable equal to the constant in the clause.

EXAMPLE 3.1. Consider the following clause, that may be a part of a learned clause over the integrated IMDb and BOM database for *highGrossing*.

$$\begin{aligned} \text{highGrossing}(x) \leftarrow & \text{mov2locale}(x, \text{English}, z), \\ & \text{mov2locale}(x, \text{English}, t). \end{aligned}$$

This clause reflects a violation of CFD ϕ_1 from Section 2.3 in the underlying database as it indicates that English movies with the same title are produced in different countries. We first replace each occurrence of repeated variable x with a new variable and then add the repair literals. Due to the limited space, we do not show the repair literals and their conditions for modifying the values of constant 'English'. Let condition c be $x_1 = x_2 \wedge z \neq t$.

$$\begin{aligned} \text{highGrossing}(x_1) \leftarrow & \text{mov2locale}(x_1, \text{English}, z), \\ & \text{mov2locale}(x_2, \text{English}, t), x_1 = x_2, V_c(x_1, v_{x_1}), \\ & V_c(x_2, v_{x_2}), v_{x_1} \neq x_2, v_{x_2} \neq x_1, V_c(z, t), \\ & V_c(t, z), V_c(z, v_z), V_c(t, v_t), v_z = v_t. \end{aligned}$$

We call a clause (definition) *repaired* if it does *not* have any repair literal. Each clause with repair literals represents a set of repaired clauses. We convert a clause with repair literals to a set of repaired clauses by iteratively applying repair literals to and eliminating them from the clause. To apply a repair literal $V_c(x, v_x)$ to a clause, we first evaluate c considering the (restriction) literals in the clause. If c holds, we replace all occurrences of x with v_x in all literals and the conditions of the other repair literals in the clause and remove $V_c(x, v_x)$. Otherwise, we only eliminate $V_c(x, v_x)$ from the clause. We progressively apply all repair literals until no repair literal is left. Finally, we remove all restriction and induced equality literals that contain at least one variable that does not appear in any literal with a schema relation symbol. The resulting set is called the *repaired clauses* of the input clause.

EXAMPLE 3.2. Consider the following clause over the movie database of IMDb and BOM.

$$\begin{aligned} \text{highGrossing}(x) \leftarrow & \text{movies}(y, t, z), \text{mov2genres}(y, \text{'comedy'}), \\ & \text{highBudgetMovies}(x), x \approx t, V_{x \approx t}(x, v_x), \\ & V_{x \approx t}(t, v_t), v_x = v_t. \end{aligned}$$

The application of repair literals $V_{x \approx t}(x, v_x)$ and $V_{x \approx t}(t, v_t)$ results in the following clause.

$$\begin{aligned} \text{highGrossing}(v_x) \leftarrow & \text{movies}(y, v_t, z), \text{mov2genres}(y, \text{'comedy'}), \\ & \text{highBudgetMovies}(v_x), v_x = v_t. \end{aligned}$$

Similar to the repair of a database based on MDs and CFDs, the application of a set of repair literals to a clause may create multiple repaired clauses depending on the order by which the repair literals are applied.

EXAMPLE 3.3. Consider a target relation $T(A)$, an input database with schema $\{R(B), S(C)\}$, and MDs $\phi_1 : T[A] \approx R[B] \rightarrow T[A] \rightleftharpoons R[B]$ and $\phi_2 : T[A] \approx S[C] \rightarrow T[A] \rightleftharpoons S[C]$. The definition $H : T(x) \leftarrow R(y), x \approx y, V_{x \approx y}(x, v_x), V_{x \approx y}(y, v_y), v_x = v_y, S(z), x \approx z, V_{x \approx z}(x, u_x), V_{x \approx z}(z, v_z), u_x = v_z$. over this schema has two repaired definitions: $H'_1 : T(v_x) \leftarrow R(v_y), v_x = v_y, S(z)$. and $H'_2 : T(u_x) \leftarrow R(y), S(v_z), u_x = v_z$. As another example, the application of each repair literal in the clause of Example 3.1 results in a distinct repaired clause. For instance, applying $V_c(x_1, v_{x_1})$ replaces x_1 with v_{x_1} in all literals and conditions of the repair literals and results in the following.

$highGrossing(v_{x_1}) \leftarrow mov2locale(v_{x_1}, English, z),$
 $mov2locale(x_2, English, t), V_c(x_2, v_{x_2}), v_{x_1} \neq x_2.$

As Example 3.3 illustrates, repair literals provide a compact representation of multiple learned clauses where each may explain the patterns in the training data in some repair of the input database. Given an input definition H , the *repaired definitions* of H are a set of definitions where each one contains exactly one repaired clause per each clause in H .

3.3 Coverage Over Heterogeneous Data

A learning algorithm evaluates the score of a definition according to the number of its covered positive and negative examples. One way to measure the score of a definition is to compute the difference of the number of positive and negative examples covered by the definition [17, 47, 54]. Each definition may have multiple repaired definitions each of which may cover a different number of positive and negative examples on the repairs of the underlying database. Thus, it is not clear how to compute the score of a definition.

One approach is to consider that a definition covers a positive example if at least one of its repaired definitions covers it in some repaired instances. Given all other conditions are the same, this approach may lead to learning a definition with numerous repaired definitions where each may not cover sufficiently many positive examples. Hence, it is not clear whether each repaired definition is accurate. A more restrictive approach is to consider that a definition covers a positive example if all its repaired definitions cover it. This method will deliver a definition whose repaired definitions have high positive coverage over repaired instances. There are similar alternatives for defining coverage of negative examples. One may consider that a definition covers a negative example if all of its repaired definitions cover it. Thus, if at least one repaired definition does not cover the negative example, the definition will not cover it. This approach may

lead to learning numerous repaired definitions, which cover many negative examples. On the other hand, a restrictive approach may define a negative example covered by a definition if at least one of its repaired definitions covers it. In this case, generally speaking, each learned repaired definition will *not* cover too many negative examples. We follow a more restrictive approach.

DEFINITION 3.4. A definition H covers a positive example e w.r.t. to database I iff every repaired definition of H covers e in some repairs of I .

EXAMPLE 3.5. Consider again the schema, MDs, and definition H in Examples 3.3 and the database of this schema with training example $T(a)$ and tuples $\{R(b), S(c)\}$. Assume that $a \approx b$ and $a \approx c$ are true. The database has two stable instances $I'_1 : \{T(v_{a,b}), R(v_{a,b}), S(c)\}$ and $I'_2 : \{T(v_{a,c}), R(b), S(v_{a,c})\}$. Definition H covers the single training example in the original database according to Definition 3.4 as its repaired definitions H'_1 and H'_2 cover the training example in repaired instances I'_1 and I'_2 , respectively.

Definition 3.4 provides a more flexible semantic than considering only the common information between all repaired instances as described in Section 3.1. The latter semantic considers that the definition H covers a positive example if it covers the example in all repaired instances of a database. As explained in Section 3.1, this approach may lead to ignoring many if not all examples.

DEFINITION 3.6. A definition H covers a negative example e with regard to database I if at least one of the repaired definitions of H covers e in some repairs of I .

4 DLEARN

In this section, we propose a learning algorithm called *DLearn* for learning over heterogeneous data efficiently. It follows the approach used in the bottom-up relational learning algorithms [42, 44–46]. In this approach, the *LearnClause* function in Algorithm 1 has two steps. It first builds the most specific clause in the hypothesis space that covers a given positive example, called a *bottom-clause*. Then, it generalizes the bottom-clause to cover as most positive and as fewest negative examples as possible. DLearn extends these algorithms by integrating the input MDs and CFDs into the learning process to learn over heterogeneous data.

4.1 Bottom-clause Construction

A *bottom-clause* C_e associated with an example e is the most specific clause in the hypothesis space that covers e relative to the underlying database I . Let I be the input database of schema \mathcal{S} and the set of MDs Σ and CFDs Φ . The bottom-clause construction algorithm consists of two phases. First,

Table 2: Example movie database.

movies(m1,Superbad (2007),2007)	mov2genres(m1,comedy)
movies(m2,Zoolander (2001),2001)	mov2genres(m2,comedy)
movies(m3,Orphanage (2007),2007)	mov2genres(m3,drama)
mov2countries(m1,c1)	countries(c1,USA)
mov2countries(m2,c1)	countries(c2,Spain)
mov2countries(m3,c2)	englishMovies(m1)
mov2releasedate(m1,August,2007)	englishMovies(m2)
mov2releasedate(m2,September,2001)	senglishMovies(m3)

it finds all the information in I relevant to e . The information relevant to example e is the set of tuples $I_e \subseteq I$ that are connected to e . A tuple t is connected to e if we can reach t using a sequence of exact or approximate (similarity) matching operations, starting from e . Given the information relevant to e , DLearn creates the bottom-clause C_e .

EXAMPLE 4.1. Given example $highGrossing(Superbad)$, database in Table 2, and MD $\sigma_2 : highGrossing[title] \approx movies[title] \rightarrow highGrossing[title] \rightleftharpoons movies[title]$, DLearn finds the relevant tuples $movies(m1, Superbad (2007), 2007)$, $mov2genres(m1, comedy)$, $mov2countries(m1, c1)$, $englishMovies(m1)$, $mov2releasedate(m1, August, 2007)$, and $countries(c1, USA)$. As the movie title in the training example, e.g., *Superbad*, does not exactly match with the movie title in the movies relation, e.g., *Superbad (2007)*, the tuple $movies(m1, Superbad (2007), 2007)$ is obtained through an approximate match and similarity search according to σ_2 . We get others via exact matches.

To find the information relevant to e , DLearn uses Algorithm 2. It maintains a set M that contains all seen constants. Let $e = T(a_1, \dots, a_n)$ be a training example. First, DLearn adds a_1, \dots, a_n to M . These constants are values that appear in tuples in I . Then, DLearn searches all tuples in I that contain at least one constant in M and adds them to I_e . For exact search, DLearn uses simple SQL selection queries over the underlying relational database. For similarity search, DLearn uses MDs in Σ . If M contains constants in some relation R_i and given an MD $\sigma' \in \Sigma$, $\sigma' : R_1[A_{1\dots n}] \approx R_2[B_{1\dots n}] \rightarrow R_1[C] \rightleftharpoons R_2[D]$ DLearn performs a similarity search over $R_2[B_j]$, $1 \leq j \leq n$ to find relevant tuples in R_2 , denoted by $\psi_{B_j \approx M}(R_2)$. We store these pairs of tuples that satisfy the similarity match in I_e in a table in main memory. We will discuss the details of the implementation of DLearn over relational database systems in Section 5. For each new tuple in I_e , the algorithm extracts new constants and adds them to M . It repeats this process for a fixed number of iterations d .

To create the bottom-clause C_e from I_e , DLearn first maps each constant in M to a new variable. It creates the head of the clause by creating a literal for e and replacing the constants in e with their assigned variables. Then, for each tuple $t \in I_e$, DLearn creates a literal and adds it to the body of the clause, replacing each constant in t with its assigned variable. If there is a variable that appears in more than a

Algorithm 2: DLearn bottom-clause construction algorithm.

Input : example e , # of iterations d

Output : bottom-clause C_e

```

1  $I_e = \{\}$ 
2  $M = \{\}$  //  $M$  stores known constants
3 add constants in  $e$  to  $M$ 
4 for  $i = 1$  to  $d$  do
5   foreach relation  $R \in I$  do
6     foreach attribute  $A$  in  $R$  do
7       // select tuples with constants in  $M$ 
8        $I_R = \sigma_{A \in M}(R)$ 
9       if  $\exists MD \sigma' \in \Sigma, \sigma' : R_1[A_{1\dots n}] \approx$ 
10           $R_2[B_{1\dots n}] \rightarrow R_1[C] \rightleftharpoons R_2[D]$  then
11         |  $I_R = I_R \cup \psi_{B_j \approx M}(R), 1 \leq j \leq n$ 
12         | foreach tuple  $t \in I_R$  do
13           | add  $t$  to  $I_e$  and constants in  $t$  to  $M$ 
14  $C_e =$  create clause from  $e$  and  $I_e$ 
15 return  $C_e$ 

```

single literal, we add the equality literals according to the method explained in Section 3.2. If t satisfies a similarity match according to the table of similarity matches with tuple t' , we add a similarity literal s per each value match in t and t' to the clause. Let σ be the corresponding MD of this similarity match. We will also add repair literals $V_s(x, v_x)$ and $V_s(y, v_y)$ and restriction equality literal $v_x = v_y$ to the clause according to σ .

EXAMPLE 4.2. Given the relevant tuples found in Example 4.1, DLearn creates the following bottom-clause:

$$\begin{aligned}
&highGrossing(x) \leftarrow movies(y, t, z), x \approx t, V_{x \approx t}(x, v_x), \\
&V_{x \approx t}(t, v_t), v_x = v_t, mov2genres(y, 'comedy'), \\
&mov2countries(y, u), countries(u, 'USA'), \\
&englishMovies(y), mov2releasedate(y, 'August', w).
\end{aligned}$$

Then, we scan C_e to find violations of each CFD in Φ and add their corresponding repair literals. Since each CFD is defined over a single table, we first group literals in C_e based on their relation symbols. For each group with the relation symbol R and CFD ϕ on R , our algorithm scans the literals in the group, finds every pair of literals that violate ϕ , and adds the repair and restriction literals to the group. We add the repair and restriction literals corresponding to the repair operations explained in Section 2.3 to the group and consequently C_e as illustrated in Example 3.1. The added repair literals will not induce any new violation of ϕ in the clause [15, 23, 53]. However, repairing a violation of ϕ may induce violations for another CFD ϕ' over R [23]. For example, consider CFD $\phi_3 : (A \rightarrow B, - \parallel -)$ and $\phi_4 : (B \rightarrow C, - \parallel -)$ on relation

$R(A, B, C)$. Given literals $l_1 : R(x_1, y_1, z_1)$ and $l_2 : R(x_1, y_1, z_2)$ that violate ϕ_4 , our method adds repair literals that replaces y_1 in l_1 with a fresh variable. This repair literal produces a repaired clause that violates ϕ_3 . Thus, the algorithm repeatedly scans the clause and adds repair and restriction literals to it for all CFDs until there is a repair for every violation of CFDs both the ones in the original clause and the ones induced by the repair literals added in the preceding iterations. The repaired literals for the violations induced by other repair literals will use the replacement variables from the violating repair literals as their arguments and conditions.

It may take a long time to generate the clause that contains all repair literals for all original and induced violations of every CFD in a large input bottom-clause. Hence, we reduce the number of repair literals per CFD violation by adding only the repair literals for the variables of the right-hand side attribute of the CFD that use current variables in the violation. For instance, in Example 3.1, the algorithm does *not* introduce literals $V_c(z, v_z)$, $V_c(t, v_t)$, and $v_z = v_t$ and only uses literals $V_c(z, t)$ and $V_c(t, z)$ to repair the clause in Example 3.1. The repair literals for the variables corresponding to the left-hand side of the CFD will be used as explained before. This approach follows the popular minimal repair semantic for repairing CFDs [11, 15, 23, 25, 37, 52, 53] as it repairs the violation by modifying fewer variable than the repair literals that introduce fresh variables to the both literals of the violation, e.g., one versus two modifications induced by $V_c(z, v_z)$, $V_c(t, v_t)$ in the repair of the clause in Example 3.1. Since each CFD is defined over a single relation, the aforementioned steps are applied separately to literals of each relation, which are usually a considerably smaller set than the set of all literals in the bottom-clause. Moreover, the bottom-clause is significantly smaller than the size of the whole database. Thus, the bottom-clause construction algorithm takes significantly less time than producing the repairs of the underlying database.

Current bottom-clause constructions methods do not induce inequality *neq* literal between distinct constants in the database and their corresponding variables and represent their relationship by replacing them with distinct variables. If the inequality literal is used, the eventual generalization of the bottom-clause may be too strict and lead to a learned clause that does not cover sufficiently many positive examples [17, 43, 45, 46]. For example, let $T(x) : -R(x, y), S(x, z), y \neq z$. be a bottom-clause. This clause will not cover positive examples such as $T(a)$ for which we have $T(a) : -R(a, b), S(a, b)$. However, the bottom-clause $T(x) : -R(x, y), S(x, z)$ has more generalization power and may cover both positive examples such as $T(a)$ and $T(c)$ such that $T(c) : -R(c, b), S(c, d)$. As the goal of our algorithm is to simulate relational learning over repaired instances of the original

database, we follow the same approach and remove the inequality literals between variables. As our repair operations ensure that the arguments of inequality literals are distinct variables, our method exactly emulates bottom-clause construction in relational learning. The inequalities remain in the condition c of each repair literal V_c and will return true if the variables are distinct and there is no equality literal between them in the body of the clause and false otherwise. They are not used in learning and are used to apply repair literals on the final clause.

PROPOSITION 4.3. *The bottom-clause construction algorithm for positive example e and database I with MDs Σ and CFD Φ terminates. Also, the bottom-clause C_e created from I_e using the algorithm covers e .*

4.2 Generalization

After creating the bottom-clause C_e for example e , DLearn generalizes C_e to produce a clause that is *more general* than C_e . Clause C is more general than clause D if and only if C covers at least all positive examples covered by D . A more general clause than C_e may cover more positive examples than C_e . DLearn iteratively applies the generalization to find a clause that covers the most positive and fewest negative examples as possible. It extends the algorithm in ProGolem [45] to produce generalizations of C_e in each step efficiently. This algorithm is based on the concept of θ -subsumption, which is widely used in relational learning [17, 43, 45]. We first review the concept of θ -subsumption for repaired clauses [17, 45], then, we explain how to extend this concept and its generalization methods for non-stable clauses.

Repaired clause C θ -subsumes repaired clause D , denoted by $C \subseteq_{\theta} D$, iff there is some substitution θ such that $C\theta \subseteq D$ [2, 17], i.e., the result of applying substitution θ to literals in C creates a set of literals that is a subset of or equal to the set of literals in D . For example, clause $C_1 : highGrossing(x) \leftarrow movies(x, y, z)$ θ -subsumes $C_2 : highGrossing(a) \leftarrow movies(a, b, c), mov2genres(b, 'comedy')$ as for substitution $\theta = \{x/a, y/b, z/c\}$, we have $C_1\theta \subseteq C_2$. We call each literal L_D in D where there is a literal L_C in C such that $L_C\theta = L_D$ a *mapped* literal under θ . For Horn definitions, we have C θ -subsumes D iff $C \models G$, i.e., C logically entails D [2, 17]. Thus, θ -subsumption is sound for generalization. If clauses C and D contain equality and similarity literals, the subsumption checking requires additional testings, which can be done efficiently [2, 4, 17]. Roughly speaking, current learning algorithms generalize a clause D efficiently by eliminating some of its literals which produces a clause that θ -subsumes D . We define θ -subsumption for clauses with repair literals using its definition for the repaired ones. Given a clause D , a repair literal $V_c(x, v_x)$ in D is *connected to* a non-repair literal

L in D iff x or v_x appear in L or in the arguments of a repair literal connected to L .

DEFINITION 4.4. Let $V(C)$ denote the set of all repair literals in C θ -subsumes D , denoted by $C \subseteq_{\theta} D$, iff

- there is some substitution θ such that $C\theta \subseteq D$ where repair literals are treated as normal ones and
- every repair literal connected to a mapped literal in D is also a mapped literal under θ .

Definition 4.4 ensures that each repair literal that modifies a mapped one in D has a corresponding repair literal in C . Intuitively, this guarantees that there is subsumption mapping between corresponding repaired versions of C and D . The next step is to examine whether θ -subsumption provides a sound bases for generalization of clauses with repair literals. We first define logical entailment following the semantics of Definition 3.4.

DEFINITION 4.5. We have $C \models D$ if and only if there is an onto relation f from the set of repairs of C to the one of D such that for each repaired clause of C , C_r , and each $D_r \in f(C_r)$, we have $C_r \models D_r$.

According to Definitions 4.5, if one wants to follow the generalization method used in the current learning algorithm to check whether C generalizes D , one has enumerate and check θ -subsumption of almost every pair of repaired clauses of C and D in the worst case. Since both clauses normally contain many literals and θ -subsumption is NP-hard [2], this method is not efficient. The problem is more complex if one wants to generalize a given clause D . It may have to generate all repaired clauses of D and generalize each of them separately. It is not clear how to unify and represent all produced repaired clauses in a single non-repaired one. It quickly explodes the hypothesis space if we cannot represent them in a single clause as the algorithm may have to keep track and generalize of almost as many clauses as repairs of the underlying database. Also, because the learning algorithm performs numerous generalizations and coverage tests, learning a definition may take an extremely long time. The following theorem establishes that θ -subsumption is sound for generalization of clauses with repair literals.

THEOREM 4.6. Given clauses C and D , if C θ -subsumes D , we have $C \models D$.

To generalize C_e , DLearn randomly picks a subset $E^{+s} \subseteq E^+$ of positive examples. For each example e' in E^{+s} , DLearn generalizes C_e to produce a candidate clause C' , which is more general than C_e and covers e' . Given clause C_e and positive example $e' \in E^{+s}$, DLearn produces a clause that θ -subsumes C_e and covers e' by removing the *blocking literals*. It first creates a total order between the relation symbols and the symbols of repair literals in the schema of the underlying

database, e.g., using a lexicographical order and adding the condition and argument variables to the symbol of the repair literals. Thus, it establishes an order in each clause in the hypothesis space. Let $C_e = T \leftarrow L_1, \dots, L_n$ be the bottom-clause. The literal with relation symbol L_i is a *blocking literal* if and only if i is the least value such that for all substitutions θ where $e' = T\theta$, $(T \leftarrow L_1, \dots, L_i)\theta$ does not cover e' [45].

EXAMPLE 4.7. Consider the bottom-clause C_e in Example 4.2 and positive example $e' = \text{highGrossing}(\text{Zoolander})$. To generalize C_e to cover e' , DLearn drops the literal $\text{mov2releasedates}(y, \text{August}, u)$ because the movie *Zoolander* was not released in August.

DLearn removes all blocking literals in C_e to produce the generalized clause C' . DLearn also ensures that all literals in the resulting clause are head-connected. For example, if a non-repair literal L is dropped so as the repair literals whose only connection to the head literal is through L . Since C' is generated by dropping literals, it θ -subsumes C_e . It also covers e' by construction. DLearn generates one clause per example in E^{+s} . From the set of generalized clauses, DLearn selects the highest scoring candidate clause. The score of a clause is the number of positive minus the number of negative examples covered by the clause. DLearn then repeats this with the selected clause until its score is not improved.

During each generalization step, the algorithm should ensure that the generalization is minimal with respect to θ -subsumption, i.e., there is *not* any other clause G such that G θ -subsumes C_e and C' θ -subsumes G [45]. Otherwise, the algorithm may miss some effective clauses and produce a clause that is overly general and may cover too many negative examples. The following proposition states that DLearn produces a minimal generalization in each step.

PROPOSITION 4.8. Let C be a head-connected and ordered clause generated from a bottom-clause using DLearn generalization algorithm. Let clause D be the generalization of C produced in a single generalization step by the algorithm. Given the clause F that θ -subsumes C , if D θ -subsumes F , then D and F are equivalent.

4.3 Efficient Coverage Testing

DLearn checks whether a candidate clause covers training examples in order to find blocking literals in a clause. It also computes the score of a clause by computing the number of training examples covered by the clause. Coverage tests dominate the time for learning [17]. One approach to perform a coverage test is to transform the clause into a SQL query and evaluate it over the input database to determine the training examples covered by the clause. However, since bottom-clauses over large databases normally have many literals, e.g., hundreds of them, the SQL query will involve long joins, making the evaluation extremely slow. Furthermore, it

is challenging to evaluate clauses using this approach over heterogeneous data [10]. It is also not clear how to evaluate clauses with repair literals.

We use the concept of θ -subsumption for clauses with repair literals and the result of Theorem 4.6 to compute coverage efficiently. To evaluate whether C covers a positive example e over database I , we first build a bottom-clause G_e for e in I called a *ground bottom-clause*. Then, we check whether $C \wedge I \models e$ using θ -subsumption. We first check whether $C \subseteq_{\theta} G_e$. Based on Theorem 4.6, if we find a substitution θ for C such that $C\theta \subseteq G_e$, and C logically entails G_e , thus, C covers e . However, if we cannot find such a substitution, it is not clear whether C logically entails G_e as Theorem 4.6 does not provide the necessity of θ -subsumption for logical entailment. Fortunately, this is true if we have only repair literals for MDs in C and G_e .

THEOREM 4.9. *Given clauses C and D such that every repair literal in C and D corresponds to an MD, if $C \models D$, C θ -subsumes D .*

We leverage Theorem 4.9 to check whether C covers e efficiently as follows. Let C^{md} and G_e^{md} be the clauses that have the same head literal as C and G_e and contain all body literals in C and G_e without any connected repair literal and the ones where all their connected repair literals correspond to some MDs, respectively. Thus, if there is no subsumption between C and G_e , our algorithm tries to find a subsumption between C^m and G_e^m . If there is no subsumption mapping between C^m and G_e^m , C does not cover e . Otherwise, let C^{cfd} and G_e^{cfd} be the set of body literals of C and G_e that do not appear in the body of C^{md} and G_e^{md} , respectively. We apply the repair literals in C^{cfd} and G_e^{cfd} in C and D and perform subsumption checking for pairs of resulting clauses. If every obtained clause of C θ -subsumes at least one resulting clause of G_e , C covers e . Otherwise, C does not cover e . We note that the resulting clauses are not repairs of C and G_e as they still have the repair literals that correspond to some MD.

We follow a similar method to the one explained in the preceding paragraph to check whether clause C covers a negative example with the difference that we use the semantic introduced in Definition 3.6 to determine the coverage of negative examples. Let G_{e^-} be the ground bottom-clause for the negative example e^- . We generate all repaired clauses of the clause C as described in Section 3. Then, we check whether each repaired clause of C θ -subsumes G_{e^-} the same way as checking θ -subsumption for C and a ground bottom-clause for a positive example. C θ -subsumes G_{e^-} as soon as one repaired clause of C θ -subsumes G_{e^-} .

PROPOSITION 4.10. *Given the clause C and ground bottom-clause G_{e^-} for negative example e^- relative to database I , clause C covers e^- iff a repair of C θ -subsumes G_{e^-} .*

Commutativity of Cleaning & Learning: An interesting question is whether our algorithm produces essentially the same answer as the one that learns a repaired definition over each repair of I separately. We show that, roughly speaking, our algorithm delivers the same information as the one that separately learns over each repaired instance. Thus, our algorithm learns using the compact representation without any loss of information. Let $RepairedCls(C)$ denote the set of all repaired clauses of clause C . Let $BC(e, I, \Sigma, \Phi)$ denote the bottom-clause generated by applying the bottom-clause construction algorithm in Section 4.1 using example e over database I with the set of MDs Σ and CFDs Φ . Also, let $BC_r(e, RepairedInst(I, \Sigma, \Phi))$ be the set of repaired clauses generated by applying the bottom-clause construction to each repair of I for e .

THEOREM 4.11. *Given database I with MDs Σ , CFDs Φ and set of positive examples E^+ , for every positive example $e \in E^+$ $BC_r(e, RepairedInst(I, \Sigma, \Phi)) = RepairedCls(BC(e, I, \Sigma))$.*

Now, assume that $Generalize(C, e', I, \Sigma, \Phi)$ denotes the clause produced by generalizing C to cover example e' over database I with the set of MDs Σ and CFDs Φ in a single step of applying the algorithm in Section 4.2. Give a set of repaired clauses C , let $Generalize_r(C, e', RepairedInst(I, \Sigma, \Phi))$ be the set of repaired clauses produced by generalizing every repaired clause in C to cover example e' in some repair of I using the algorithm in Section 4.2.

THEOREM 4.12. *Given database I with MDs Σ and set of positive examples E^+ $Generalize_r(StableCls(C), e', RepairedInst(I, \Sigma, \Phi)) = RepairedCls(Generalize(C, I, e', \Sigma, \Phi))$.*

5 IMPLEMENTATION

DLearn is implemented on top of VoltDB, *voltldb.com*, a main-memory RDBMS. We use the indexing and query processing mechanisms of the database system to create the (ground) bottom-clauses efficiently. The set of tuples I_e that DLearn gathers to build a bottom-clause may be large if many tuples in I are relevant to e , particularly when learning over a large database. To overcome this problem, DLearn randomly samples from the tuples in I_e to obtain a smaller tuple set $I_e^s \subseteq I_e$ and crates the bottom-clause based on the sampled data [45, 46]. To do so, DLearn restricts the number of literals added to the bottom-clause per relation through a parameter called *sample size*. To implement similarity over strings, DLearn uses the operator defined as the average of the *Smith-Waterman-Gotoh* and the *Length* similarity functions. The *Smith-Waterman-Gotoh* function [31] measures the similarity of two strings based on their local sequence alignments. The *Length* function computes the similarity of the length of two strings by dividing the length of the smaller string by the length of the larger string. To improve efficiency, we precompute the pairs of similar values.

Table 3: Numbers of relations (#R), tuples (#T), positive examples (#P), and negative examples (#N) for each dataset.

Name	#R	#T	#P	#N
IMDB	9	3.3M	100	200
OMDB	15	4.8M		
Walmart	8	19K	77	154
Amazon	13	216K		
DBLP	4	15K	500	1000
Google Scholar	4	328K		

6 EXPERIMENTS

6.1 Experimental Settings

6.1.1 Datasets. We use databases shown in Table 3.

IMDB + OMDB: The Internet Movie Database (IMDB) and Open Movie Database (OMDB) contain information about movies, such as their titles, year and country of production, genre, directors, and actors [16]. We learn the target relation *dramaRestrictedMovies(imdbId)*, which contains the *imdbId* of movies that are of the *drama* genre and are rated R. The *imdbId* is only contained in the IMDB database, the genre information is contained in both databases, and the rating information is only contained in the OMDB database. We specify an MD that matches movie titles in IMDB with movie titles in OMDB. We refer to this dataset with one MD as **IMDB + OMDB (one MD)**. We also create MDs that match cast members and writer names between the two databases. We refer to the dataset that contains the three MDs as **IMDB + OMDB (three MDs)**.

Walmart + Amazon: The Walmart and Amazon databases contain information about products, such as their brand, price, categories, dimensions, and weight [16]. We learn the target relation *upcOfComputersAccessories(upc)*, which contains the *upc* of products that are of category *Computers Accessories*. The *upc* is contained in the Walmart database and the information about categories of products is contained in the Amazon database. We use an MD that connects the product names across the datasets.

DBLP + Google Scholar: The DBLP and Google Scholar databases contain information about academic papers, such as their titles, authors, and venue and year of publication [16]. The information in the Google Scholar database is not clean, complete, or consistent, e.g., many tuples are missing the year of publication. Therefore, we aim to augment the information in the Google Scholar database with information from the DBLP database. We learn the target relation *gsPaperYear(gsId, year)*, which contains the Google Scholar id *gsId* and the *year* of publication of the paper as indicated in the DBLP database. We use two MDs that match titles and venues in datasets.

6.1.2 CFDs. We find 4, 6, and 2 CFDs for IMDB+OMDB, Amazon+Walmart, and DBLP+Google Scholar, respectively,

e.g., *id* determines *title* in Google Scholar. To test the performance of DLearn on data that contains CFD violations, we inject each aforementioned dataset with varying proportions of CFD violations, p , randomly. For example, p of 5% means that 5% of tuples in each relation violate at least one CFD.

6.1.3 Systems, Metrics, and Environment. We compare DLearn against three baseline methods to evaluate the handling of MDs over datasets with only MDs. These methods use *Castor*, a state-of-the-art relational learning system [46].

Castor-NoMD: We use Castor to learn over the original databases. It does not use any information from MDs.

Castor-Exact: We use Castor, but allow the attributes that appear in an MD to be joined through exact joins. Therefore, this system uses information from MDs but only considers exact matches between values.

Castor-Clean: We resolve the heterogeneities between entity names in attributes that appear in an MD by matching each entity in one database with the most similar entity in the other database. We use the same similarity function used by DLearn. Once the entities are resolved, we use Castor to learn over the unified and clean database.

To evaluate the effectiveness and efficiency of the version of DLearn that supports both MDs and CFDs, **DLearn-CFD** we compare it with a version of DLearn that supports only MDs and is run over a version of the database whose CFD violations are repaired, **DLearn-Repaired**. We obtain this repair using the minimal repair method, which is popular in repairing CFDs [23]. This enables us to evaluate our method for each type of inconsistencies separately. We perform 5-fold cross validation over all datasets and report the average F1-score and time over the cross validation. DLearn uses the parameter *sample size* to restrict the size of (ground) bottom-clauses. We fix *sample size* to 10. All systems use 16 threads to parallelize coverage testing. We use a server with 30 2.3GHz Intel Xeon E5-2670 processors, running CentOS Linux with 500GB of main memory.

6.2 Empirical Results

6.2.1 Handling MDs. Table 4 shows the results over all datasets using DLearn and the baseline systems. DLearn obtains a better F1-score than the baselines for all datasets. Castor-Exact obtains a competitive F1-score in the IMDB + BOM dataset with three MDs. The MDs that match cast members and writer names between the two databases contain many exact matches. DLearn also learns effective definitions over heterogeneous databases efficiently. Using MDs enables DLearn to consider more patterns, thus, learn a more effective definition. For example, Castor-Clean learns the

Table 4: Results of learning over all datasets with MDs. Number of top similar matches denoted by k_m .

Dataset	Metric	Castor-NoMD	Castor-Exact	Castor-Clean	DLearn		
					$k_m = 2$	$k_m = 5$	$k_m = 10$
IMDB + OMDB (one MD)	F1-score	0.47	0.59	0.86	0.90	0.92	0.92
	Time (m)	0.12	0.13	0.18	0.26	0.42	0.87
IMDB + OMDB (three MDs)	F1-score	0.47	0.82	0.86	0.90	0.93	0.89
	Time (m)	0.12	0.48	0.21	0.30	25.87	285.39
Walmart + Amazon	F1-score	0.39	0.39	0.61	0.61	0.63	0.71
	Time (m)	0.09	0.13	0.13	0.13	0.13	0.17
DBLP + Google Scholar	F1-score	0	0.54	0.61	0.67	0.71	0.82
	Time (m)	2.5	2.5	3.1	2.7	2.7	2.7

Table 5: Results of learning over all datasets with MDs and CFD violations. p is the percentage of CFD violation.

Dataset	Metric	DLearn-CFD			DLearn-Repaired		
		$p = 0.05$	$p = 0.10$	$p = 0.20$	$p = 0.05$	$p = 0.10$	$p = 0.20$
IMDB + OMDB (three MDs)	F-1 Score	0.79	0.78	0.73	0.76	0.73	0.50
	Time (m)	11.15	16.26	26.95	5.70	12.54	22.28
Walmart + Amazon	F-1 Score	0.64	0.61	0.54	0.49	0.52	0.56
	Time (m)	0.17	0.2	0.23	0.18	0.18	0.19
DBLP + Google Scholar	F-1 Score	0.79	0.68	0.47	0.73	0.55	0.23
	Time (m)	5.92	7.04	8.57	2.51	2.6	6.51

Table 6: Learning over the IMDB+OMDB (3 MDs) with CFD violations by increasing positive (#P) and negative (#N) examples.

#P/#N	$k_m = 5$				$k_m = 2$			
	100/200	500/1k	1k/2k	2k/4k	100/200	500/1k	1k/2k	2k/4k
F-1 Score	0.78	0.82	0.81	0.82	0.78	0.79	0.81	0.81
Time (m)	16.26	72.16	121.04	317.5	0.34	2.01	2.76	5.19

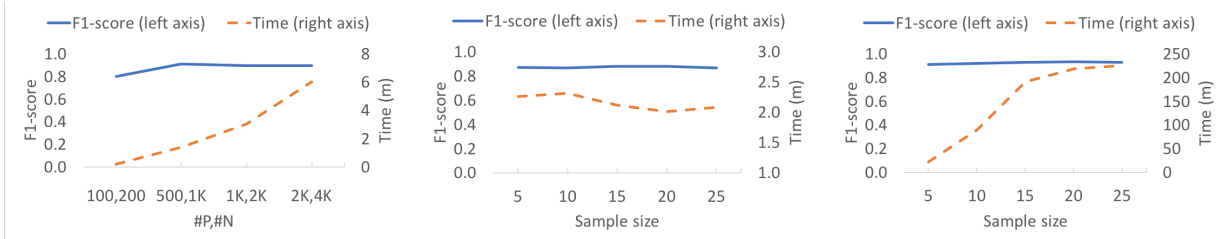


Figure 1: Learning over the IMDB+OMDB (3 MDs) dataset while increasing the number of positive and negative (#P, #N) examples (left) and while increasing sample size for $k_m = 2$ (middle) and $k_m = 5$ (right).

following definition over Walmart + Amazon:

```

upcComputersAccessories(v0) ← walmart_ids(v1, v2, v0),
walmart_title(v1, v9), v9 = v10,
walmart_groupname(v1, "Electronics - General"),
amazon_title(v11, v10), amazon_listprice(v11, v16).
(positove covered=29, negative covered=11)
upcComputersAccessories(v0) ← walmart_ids(v1, v2, v0),
walmart_title(v1, v6), v6 = v7, amazon_title(v8, v7),
amazon_category(v8, "ComputersAccessories").
(positove covered=38, negative covered=4)

```

The definitions learned by DLearn over the same data is:

```

upcComputersAccessories(v0) ← walmart_ids(v1, v2, v0),
walmart_title(v1, v9), v9 ≈ v10,
amazon_title(v11, v10), amazon_itemweight(v11, v16),
amazon_category(v11, "ComputersAccessories").
(positove covered=35, negative covered=5)
upcComputersAccessories(v0) ← walmart_ids(v1, v2, v0),
walmart_brand(v1, "Tribeca").
(positove covered=8, negative covered=0)

```

Table 7: Results of changing the number of iterations.

Metric	$k_m = 5$			
	d=2	d=3	d=4	d=5
F-1 Score	0.52	0.52	0.78	0.80
Time (m)	1.35	4.35	16.26	37.56

The definition learned by DLearn has higher precision; they have a similar recall. Castor-Clean first learns a clause that covers many positive examples but is not the desired clause. This affects its precision. DLearn first learns the desired clause and then learns a clause that has high precision.

The effectiveness of the definitions learned by DLearn depends on the number of matches considered in MDs, denoted by k_m . In the Walmart + Amazon, IMDB + BOM (one MD), and DBLP + Google Scholar datasets, using a higher k_m value results in learning a definition with higher F1-score. When using multiple MDs or when learning a difficult concept, a high k_m value affects DLearn’s effectiveness. In these cases, incorrect matches represent noise that affects DLearn’s ability to learn an effective definition. Nevertheless, it still delivers a more effective definition than other methods. As the value of k_m increases so does the learning time. This is because DLearn has to process more information.

Next, we evaluate the effect of sampling on DLearn’s effectiveness and efficiency. We use the IMDB + OMDB (three MDs) dataset and fix $k_m = 2$ and $k_m = 5$. We use 800 positive and 1600 negative examples for training, and 200 positive and 400 negative examples for testing. Figure 1 (middle and right) shows the F1-score and learning time of DLearn with $k_m = 2$ and $k_m = 5$, respectively, when varying the sample size. For both values of k_m , the F1-score does *not* change significantly with different sampling sizes. With $k_m = 2$, the learning time remains almost the same with different sampling sizes. However, with $k_m = 5$, the learning time increases significantly. Therefore, using a small sample size is enough for learning an effective definition efficiently.

6.2.2 Handling MDs and CFDs. Table 5 compares DLearn-Repaired and DLearn-CFD. Over all three datasets DLearn-CFD performs (almost) equal to or substantially better than the baseline at all levels of violation injection. Since DLearn-CFD learns over all possible repairs of violating tuples, it has more available information and consequently its hypothesis space is a super-set of the one used by DLearn-Repaired. In most datasets, the difference is more significant as the proportion of violations increase. Both methods deliver less effective results when there are more CFD violations in the data. However, DLearn-CFD is still able to deliver reasonably effective definitions. We use $k_m = 10$ for DBLP+Google Scholar and Amazon+Walmart and $k_m = 5$ for IMDB+OMDB as it takes a long time to use $k_m = 5$ for the latter.

6.2.3 Impact of Number of Iterations. We have used values 3, 4, and 5 for the number of iterations, d , for DBLP+Google Scholar, IMDB+OMDB, and Walmart+Amazon datasets, respectively. Table 7 shows data regarding the scalability of DLearn-CFD over IMDB+OMDB (3 MD + 4 CFD). A higher d -value increases both the effectiveness as well as the runtime. We fix the value k_m at 5. A d -value higher than 4 generates a very modest increase in effectiveness with a substantial increase in runtime. This result indicates that for a given dataset, the learning algorithm can access most relevant tuples for a reasonable value of d .

6.2.4 Scalability of DLearn. We evaluate the effect of the number of training examples in both DLearn’s effectiveness and efficiency. We use the IMDB + OMDB (three MDs) dataset and fix $k_m = 2$. We generate 2100 positive and 4200 negative examples. From these sets, we use 100 positive and 200 negative examples for testing. From the remaining examples, we generate training sets containing 100, 500, 1000, and 2000 positive examples, and double the number of negative examples. For each training set, we use DLearn with MD support to learn a definition. Figure 1 (left) shows the F1-scores and learning times for each training set. With 100 positive and 200 negative examples, DLearn obtains an F1-score of 0.80. With 500 positive and 1000 negative examples, the F1-score increases to 0.91. DLearn is able to learn efficiently even with the largest training set. We also evaluate DLearn with support for both MDs and CFDs’ violations and report the results in Table 6. It indicates that DLearn with CFD and MD support can deliver effective results efficiently over large number of examples with $k_m = 2$.

7 RELATED WORK

Data cleaning is an important and flourishing area in database research [7, 13, 14, 23, 24]. Most data cleaning systems leverage declarative constraints to produce clean instances.

ActiveClean gradually cleans a dirty dataset to learn a convex-loss model, such as Logistic Regression [39]. Its goal is to clean the underlying dataset such that the learned model becomes more effective as it receives more cleaned records potentially from the user. Our objective, however, is to learn a model over the original data without cleaning it. Furthermore, ActiveClean does *not* address the problem of having multiple cleaned instances.

8 CONCLUSION & FUTURE WORK

We investigated the problem of learning directly over heterogeneous data and proposed a new method that leverages constraints in learning to represent inconsistencies. Since most of these quality problems have been modeled using declarative constraints, we plan to extend our framework to address more quality issues.

REFERENCES

- [1] Ziawasch Abedjan, Lukasz Golab, and Felix Naumann. 2015. Profiling relational data: a survey. *The VLDB Journal* 24 (2015), 557–581.
- [2] Serge Abiteboul, Richard Hull, and Victor Vianu. 1994. *Foundations of Databases: The Logical Level*. Addison-Wesley.
- [3] Azza Abouzeid, Dana Angluin, Christos H. Papadimitriou, Joseph M. Hellerstein, and Abraham Silberschatz. 2013. Learning and verifying quantified boolean queries by example. In *PODS*.
- [4] Foto Afrati, Chen Li, and Prasenjit Mitra. 2004. On Containment of Conjunctive Queries with Arithmetic Comparisons. In *Advances in Database Technology - EDBT*. 459–476.
- [5] Arvind Arasu, Surajit Chaudhuri, and Raghav Kaushik. 2008. Transformation-based Framework for Record Matching. *ICDE* (2008), 40–49.
- [6] Marcelo Arenas, Leopoldo E. Bertossi, and Jan Chomicki. 1999. Consistent Query Answers in Inconsistent Databases. In *PODS*.
- [7] Zeinab Bahmani, Leopoldo E. Bertossi, Solmaz Kolahi, and Laks V. S. Lakshmanan. 2012. Declarative Entity Resolution via Matching Dependencies and Answer Set Programs. In *KR*.
- [8] Zeinab Bahmani, Leopoldo E. Bertossi, and Nikolaos Vasiloglou. 2015. ERBlox: Combining Matching Dependencies with Machine Learning for Entity Resolution. In *SUM*.
- [9] Omar Benjelloun, Hector Garcia-Molina, David Menestrina, Qi Su, Steven Euijong Whang, and Jennifer Widom. 2008. Swoosh: a generic approach to entity resolution. *The VLDB Journal* 18 (2008), 255–276.
- [10] Leopoldo E. Bertossi, Solmaz Kolahi, and Laks V. S. Lakshmanan. 2011. Data Cleaning and Query Answering with Matching Dependencies and Matching Functions. *Theory of Computing Systems* 52 (2011), 441–482.
- [11] Philip Bohannon, Wenfei Fan, Michael Flaster, and Rajeev Rastogi. 2005. A Cost-Based Model and Effective Heuristic for Repairing Constraints by Value Modification. In *Proceedings of the 2005 ACM SIGMOD International Conference on Management of Data*. Association for Computing Machinery, New York, NY, USA, 143?154. <https://doi.org/10.1145/1066157.1066175>
- [12] P. Bohannon, W. Fan, F. Geerts, X. Jia, and A. Kementsietsidis. 2007. Conditional Functional Dependencies for Data Cleaning. In *2007 IEEE 23rd International Conference on Data Engineering*. 746–755.
- [13] Douglas Burdick, Ronald Fagin, Phokion G. Kolaitis, Lucian Popa, and Wang-Chiew Tan. 2016. A Declarative Framework for Linking Entities. *ACM Trans. Database Syst.* 41, 3, Article 17 (2016), 38 pages. <https://doi.org/10.1145/2894748>
- [14] Xu Chu, Ihab F. Ilyas, Sanjay Krishnan, and Jiannan Wang. 2016. Data Cleaning: Overview and Emerging Challenges. In *SIGMOD Conference*.
- [15] Gao Cong, Wenfei Fan, Floris Geerts, Xibei Jia, and Shuai Ma. 2007. Improving Data Quality: Consistency and Accuracy. *Proc. Int'l Conf. Very Large Data Bases (VLDB)*, 315–326.
- [16] Sanjib Das, AnHai Doan, Paul Suganthan G. C., Chaitanya Gokhale, and Pradap Konda. [n. d.]. The Magellan Data Repository. <https://sites.google.com/site/anhaidgroup/projects/data>.
- [17] Luc De Raedt. 2010. *Logical and Relational Learning* (1st ed.). Springer Publishing Company, Incorporated.
- [18] AnHai Doan, Alon Halevy, and Zachary Ives. 2012. *Principles of Data Integration* (1st ed.). Morgan Kaufmann Publishers Inc., San Francisco, CA, USA.
- [19] Pedro Domingos. 2018. Machine Learning for Data Management: Problems and Solutions. In *Proceedings of the 2018 International Conference on Management of Data (SIGMOD '18)*. Association for Computing Machinery, New York, NY, USA, 629. <https://doi.org/10.1145/3183713.3199515>
- [20] Thomas Eiter, Georg Gottlob, and Heikki Mannila. 1997. Disjunctive Datalog. *ACM Trans. Database Syst.* 22 (1997), 364–418.
- [21] Richard Evans and Edward Grefenstette. 2018. Learning Explanatory Rules from Noisy Data. *J. Artif. Intell. Res.* 61 (2018), 1–64.
- [22] Wenfei Fan. 2008. Dependencies revisited for improving data quality. In *Proceedings of the Twenty-Seventh ACM SIGMOD-SIGACT-SIGART Symposium on Principles of Database Systems, PODS 2008, June 9-11, 2008, Vancouver, BC, Canada*, Maurizio Lenzerini and Domenico Lembo (Eds.). ACM, 159–170. <https://doi.org/10.1145/1376916.1376940>
- [23] Wenfei Fan and Floris Geerts. 2012. *Foundations of Data Quality Management*. Morgan & Claypool Publishers. <https://doi.org/10.2200/S00439ED1V01Y201207DTM030>
- [24] Wenfei Fan, Xibei Jia, Jianzhong Li, and Shuai Ma. 2009. Reasoning about Record Matching Rules. *PVLDB* 2 (2009), 407–418.
- [25] Enrico Franconi, Antonio Laureti Palma, Nicola Leone, Simona Perri, and Francesco Scarcello. 2001. Census Data Repair: A Challenging Application of Disjunctive Logic Programming. In *Logic for Programming, Artificial Intelligence, and Reasoning*, Robert Nieuwenhuis and Andrei Voronkov (Eds.). Springer Berlin Heidelberg, Berlin, Heidelberg, 561–578.
- [26] Helena Galhardas, Daniela Florescu, Dennis Shasha, Eric Simon, and Cristian-Augustin Saita. 2001. Declarative Data Cleaning: Language, Model, and Algorithms. In *VLDB*.
- [27] Hector GarciaMolina, Jeff Ullman, and Jennifer Widom. 2008. *Database Systems: The Complete Book*. Prentice Hall.
- [28] Lise Getoor and Ashwin Machanavajjhala. 2013. Entity resolution for big data. In *KDD*.
- [29] Lise Getoor and Ben Taskar. 2007. *Introduction to Statistical Relational Learning*. MIT Press.
- [30] Lukasz Golab, Howard Karloff, Flip Korn, Divesh Srivastava, and Bei Yu. 2008. On Generating Near-Optimal Tableaux for Conditional Functional Dependencies. *Proc. VLDB Endow.* 1, 1 (Aug. 2008), 376–390. <https://doi.org/10.14778/1453856.1453900>
- [31] Osamu Gotoh. 1982. An improved algorithm for matching biological sequences. *Journal of Molecular Biology* 162 3 (1982), 705–708.
- [32] Miguel Ángel Hernández, Georgia Koutrika, Rajasekar Krishnamurthy, Lucian Popa, and Ryan Wisnesky. 2013. HIL: a high-level scripting language for entity integration. In *EDBT*.
- [33] Mauricio A. Hernández and Salvatore J. Stolfo. 1995. The Merge/Purge Problem for Large Databases. In *SIGMOD Conference*.
- [34] Ihab F. Ilyas. 2016. Effective Data Cleaning with Continuous Evaluation. *IEEE Data Eng. Bull.* 39, 2 (2016), 38–46. <http://sites.computer.org/debull/A16june/p38.pdf>
- [35] Dmitri V. Kalashnikov, Laks V.S. Lakshmanan, and Divesh Srivastava. 2018. FastQRE: Fast Query Reverse Engineering. In *Proceedings of the 2018 International Conference on Management of Data (SIGMOD '18)*. ACM, New York, NY, USA, 337–350. <https://doi.org/10.1145/3183713.3183727>
- [36] Angelika Kimmig, David Poole, and Jay Pujara. 2020. Statistical Relational AI (StarAI) Workshop. In *AAAI*.
- [37] Solmaz Kolahi and Laks V. S. Lakshmanan. 2009. On Approximating Optimum Repairs for Functional Dependency Violations. In *Proceedings of the 12th International Conference on Database Theory*. Association for Computing Machinery, New York, NY, USA, 53?62. <https://doi.org/10.1145/1514894.1514901>
- [38] Ioannis Koumarelas, Thorsten Papenbrock, and Felix Naumann. 2020. MDedup: Duplicate Detection with Matching Dependencies. *Proceedings of the VLDB Endowment* 13, 5 (2020), 712–725.
- [39] Sanjay Krishnan, Jiannan Wang, Eugene Wu, Michael J. Franklin, and Kenneth Y. Goldberg. 2016. ActiveClean: Interactive Data Cleaning For Statistical Modeling. *PVLDB* 9 (2016), 948–959.

- [40] Ni Lao, Einat Minkov, and William Cohen. 2015. Learning Relational Features with Backward Random Walks. In *Proceedings of the 53rd Annual Meeting of the Association for Computational Linguistics and the 7th International Joint Conference on Natural Language Processing (Volume 1: Long Papers)*. Association for Computational Linguistics, Beijing, China, 666–675. <https://doi.org/10.3115/v1/P15-1065>
- [41] Hao Li, Chee Yong Chan, and David Maier. 2015. Query From Examples: An Iterative, Data-Driven Approach to Query Construction. *PVLDB* 8 (2015), 2158–2169.
- [42] Lilyana Mihalkova and Raymond J. Mooney. 2007. Bottom-up learning of Markov logic network structure. In *ICML*.
- [43] Stephen Muggleton. 1995. Inverse entailment and Progol. *New Generation Computing* 13 (1995), 245–286.
- [44] Stephen Muggleton and Cao Feng. 1990. Efficient Induction of Logic Programs. In *ALT*.
- [45] Stephen Muggleton, Jose Santos, and Alireza Tamaddoni-Nezhad. 2009. ProGolem: A System Based on Relative Minimal Generalisation. In *ILP*.
- [46] Jose Picado, Arash Termehchy, and Alan Fern. 2017. Schema Independent Relational Learning. In *SIGMOD Conference*.
- [47] J. Ross Quinlan. 1990. Learning Logical Definitions from Relations. *Machine Learning* 5 (1990), 239–266.
- [48] Luc De Raedt, David Poole, Kristian Kersting, and Sriraam Natarajan. 2017. Statistical Relational Artificial Intelligence: Logic, Probability and Computation. In *NeurIPS*.
- [49] Theodoros I. Rekatsinas, Xu Chu, Ihab F. Ilyas, and Christopher Ré. 2017. HoloClean: Holistic Data Repairs with Probabilistic Inference. *PVLDB* 10 (2017), 1190–1201.
- [50] Matthew Richardson and Pedro M. Domingos. 2006. Markov logic networks. *Machine Learning* 62 (2006), 107–136.
- [51] Melanie Weis, Felix Naumann, Ulrich Jehle, Jens Lufter, and Holger Schuster. 2008. Industry-scale duplicate detection. *PVLDB* 1 (2008), 1253–1264.
- [52] Jef Wijsen. 2003. Condensed Representation of Database Repairs for Consistent Query Answering. In *Proceedings of the 9th International Conference on Database Theory*. Springer-Verlag, Berlin, Heidelberg, 378?393.
- [53] Mohamed Yakout, Ahmed K. Elmagarmid, Jennifer Neville, Mourad Ouzzani, and Ihab F. Ilyas. 2011. Guided Data Repair. *Proc. VLDB Endow.* 4, 5 (Feb. 2011), 279?289. <https://doi.org/10.14778/1952376.1952378>
- [54] Qiang Zeng, Jignesh M. Patel, and David Page. 2014. QuickFOIL: Scalable Inductive Logic Programming. *PVLDB* 8 (2014), 197–208.

A OMITTED PROOFS

Proof of Proposition 4.3:

We show that the algorithm never adds a repair literal that reverts the impact of a previously added repair literal. This may happen only if there is a chain of CFDs, such as, $\phi : AC \rightarrow B, t_p$ and $\phi' : BD \rightarrow A, t'_p$ over relation R . Consider a violation of ϕ with two literals l_1 and l_2 of R in the input bottom-clause in which the variables associated with attributes A and C are equal and match t_p but the variables associated with B are not equal or do not satisfy t_p . Let repair literal r_ϕ unify the value of variables in attribute B for a violation of ϕ and set them to a constant if their corresponding element in t_p is a constant. We show that the repair introduced by r_ϕ does not cause a violation of ϕ' for literals l_2 and l_1 . Let the values for A in t_p and t'_p be equal or at least

one of them is '-'. If the variables assigned to attribute D in l_2 and l_1 are equal and match t'_p , l_2 and l_1 satisfy ϕ' as the violation of ϕ indicate that the variables assigned to attribute A in l_2 and l_1 are equal. If the variables assigned to attribute D are not equal, l_2 and l_1 satisfy ϕ' . Now, assume that values for A in t_p and t'_p are unequal constants. Then, ϕ and ϕ' are not consistent. The proposition is proved for longer chains similarly.

Let C_e^s be a repaired clause created by the application of a set of repair literals r in C_e . Application of repair literals in r correspond to applying some MDs in Σ or CFDs in Φ on I_e that creates a repair of I_e such that C_e^s covers e . Thus, according to Definition 3.4, C_e covers e .

Proof for Theorem 4.6:

Let θ be the substitution mapping from C to D . Let V^D be a mapped repair literal in D with corresponding literal in C V^C such that $V^C\theta = V^D$. If variables/constants x and y are equal or similar in C , $\theta(x)$ and $\theta(y)$ are also equal in D . Thus, V^C and V^D are applied to literals L_1^C and L_2^C and L_1^D and L_2^D such that $L_i^C\theta = L_i^D$, $1 \leq i \leq 2$, and modify the variables in those literals that are mapped via θ . In our clauses, there is not any repair literal V whose condition is false. Otherwise, V either has not been placed in the clause or has been removed from it after applying another repair literal that makes the condition of V false. Let M_i^C and M_i^D be the modifications of L_i^C and L_i^D , respectively. By applying V^C and V^D on their corresponding literal, we will have $M_i^C\theta = M_i^D$. Moreover, if V^C replaces a variable x with v_x , V^C will also replace $y = x\theta$ with v_y such that $v_y = v_x\theta$. Each repair literal either unifies two variables in two non-repair literals using fresh (MD applications) or existing variables (CFD repair by modifying the right-hand side) or replaces existing variable(s) with fresh ones (CFD repair by changing the left-hand side). Since equal variables in C are mapped to equal ones in D , the applications of V^C and V^D will result in removing repair literals U^C and in U^D such that $U^C\theta = U^D$.

The unmapped repair literals in D do not modify θ for the variables as they are not connected to the mapped non-repair literals of D . Let C_r and D_r be result of applying V^C and V^D , respectively. There is a subsumption mapping between C_r and D_r using a substitution $\theta' \subseteq \theta$. θ' may not have some of the variables that exist in C and D but not C_r and D_r . Thus, there is a *theta*-subsumption between the clauses after each repair. We repeat the same argument for applications of each repair literals other than V^C and V^D in C and D and also every repair literal in every resulting repairs of C and D , such as C_r and D_r . As there are θ -subsumption between every repair of C and some repair of D , according to the definition of logical entailment for clauses with repair literals, $C \models D$.

Proof for Proposition 4.8:

Since we drop each literal in a clause with its repair literals, it corresponds to dropping the repairs of this literal in each repaired version of the clause during its generalization over its corresponding clean database. Thus, according to Theorem 4.6, the proof is similar to the one of Theorem 3 in [45].

Proof for Theorem 4.9:

Let C and \mathcal{D} be the set of repaired clauses for C and D , respectively. According to definition of logical entailment for clauses with repair literals, for each $C_r \in C$, there is a $D_r \in \mathcal{D}$ such that $C_r \models D_r$. Since C_r and D_r do not have any repair literal, there is a substitution mapping θ_r such that $C_r \theta_r \subseteq D_r$. Let C_o and D_o be clauses where the application of a single repair literal result in producing C_r and D_r . We show that for each C_o there is a D_o such that there is a substitution mapping θ_o between C_o and D_o . C_r and D_r are defined over the same database with the same set of constraints and we add similarity literal(s) to clauses during the process of (ground) bottom-clause construction if they satisfy the application of an MD. For every pair of literals L_1 and L_2 in C_r , if they satisfy the left-hand side of an MD, there are repair literals to apply the MD in C for these literals. The same is true in D_r and D . If the repair applied on C_o is due to an MD, as θ_r preserves similarity and equality between variables, there is a D_o for D_r such that the repair applied on D_o must also be according to an MD. Also, we do not have a CFD and MD that share their left-hand side as MDs are defined over distinct relations. Let $V_j^C(x_j, v_{x_j}), V_j^D(y_j, v_{y_j}), 1 \leq j \leq 2$ be the repair literals that modify C_o and D_o to C_r and D_r . The mapping θ_r maps v_{x_j} to v_{y_j} . If variables x_j and y_j do not appear in C_r and D_r , we add new mappings from x_j to y_j to θ_r to get subsumption mapping θ_o between C_o and D_o . Otherwise, x_1 and x_2 and y_1 and y_2 appear in similarity literals in C and D , respectively. Thus, they are mapped using θ_r . Thus, there is a subsumption mapping between C_o and D_o in both cases.

Proof for Proposition 4.10:

According to Theorem 4.6, if $s_C \theta$ -subsumes G_{e^-} , C covers e^- relative to I based on Definition 3.6.

Proof for Theorem 4.11:

Without loss of generality, assume that all learned definitions contain one clause. Let $J = \text{RepairedInst}(I, \Sigma, \Phi) = \{J_1, \dots, J_n\}$. We show that $BC(I, e, \Sigma, \Phi) = C$ is a compact representation of $BC_r(J, e) = \{C_1, \dots, C_n\}$.

Let $\text{RepairedCls}(C) = \{C'_1, \dots, C'_m\}$. We remove the literals that are not head-connected in each clause in $\{C'_1, \dots, C'_m\}$. Let $\{J^{C'_1}, \dots, J^{C'_m}\}$ be the canonical database instances of $\{C'_1, \dots, C'_m\}$ [2]. This set is the same set as the one generated

by applying $\text{RepairedInst}(I^C, \Sigma, \Phi)$, where I^C is the canonical database instance of C .

Let $\{J^{C_1}, \dots, J^{C_n}\}$ be the canonical database instances of $\{C_1, \dots, C_n\}$. By definition, I^C contains all tuples that are related to e , either by exact or similarity matching (according to MDs in Σ). Because $\text{RepairedInst}(I^C, \Sigma) = \{J^{C'_1}, \dots, J^{C'_m}\}$, all tuples that may appear in an instance in $\{J^{C_1}, \dots, J^{C_n}\}$ must also appear in an instance in $\{J^{C'_1}, \dots, J^{C'_m}\}$.

A tuple t may appear in an instance in $J^{C'_j} \in \{J^{C'_1}, \dots, J^{C'_m}\}$, but not appear in the corresponding instance $J^{C_i} \in \{J^{C_1}, \dots, J^{C_n}\}$. In this case, t became disconnected from training example e when generating the repair J_i , which is a superset of J^{C_i} . Then, when building bottom-clause C_i from J_i , a literal was not created for t . However, the same tuple would also become disconnected from training example e in $J^{C'_j}$. Because we remove literals that are not head-connected in each clause in $\{C'_1, \dots, C'_m\}$, we would remove t from C'_j .

Let $R(\bar{x}, y, \bar{z})$ and $R(\bar{x}, y', \bar{z}')$ be a violation of CFD ($X \rightarrow A, t_p$) in the bottom-clause generated by our algorithm. Each constant or variables in these literal remains unchanged in at least one application of the repair literals. Thus, if these literals are connected to the positive example e in at least one of the repairs of I they will appear in the generated bottom-clause of our algorithm. Also, if they appear in the our produced bottom-clause, they must appear at least in one of the repairs of I .

The sets of canonical database instances $\{J^{C'_1}, \dots, J^{C'_m}\}$ and $\{J^{C_1}, \dots, J^{C_n}\}$ are both generated using the function RepairedInst with the same dependencies Σ and Φ , and contain only tuples related to e . Therefore, $(C) = \{C'_1, \dots, C'_m\}$ is equal to $\{C_1, \dots, C_n\}$.

Proof for Theorem 4.12:

We prove the theorem for the MDs. The proof for CFDs is done similarly. Let $J = \text{RepairedInst}(I, \Sigma)$. We show that the clause $\text{Generalize}(C, I, e', \Sigma) = C^*$ is a compact representation of $\text{Generalize}_r(C, J, e') = \{C^*_1, \dots, C^*_n\}$, i.e. $\text{RepairedCls}(C^*) = \{C^*_1, \dots, C^*_n\}$.

Assume that the schema is $\mathcal{R} = \{R_1(A, B), R_2(B, C)\}$ and we have MD $\phi : R_1[B] \approx R_2[B] \rightarrow R_1[B] \rightleftharpoons R_2[B]$. This proof generalizes to more complex schemas. Assume that database instance I contains tuples $R_1(a, b)$, $R_2(b', c)$, and $R_2(b'', c)$, and that $b \approx b'$ and $b \approx b''$. Then, bottom-clause C has the form

$$\begin{aligned} T(u) \leftarrow & L'_1, \dots, L'_{l-1}, \\ & R_1(a, b), R_2(b', c), V(b, x_b), V(b', x_{b'}), x_b = x_{b'} \\ & R_2(b'', d), V(b, y_b), V(b'', y_{b''}), y_b = y_{b''} \\ & L'_1, \dots, L'_n, \end{aligned}$$

where $L'_k, 1 \leq k \leq n$, is a literal.

Now consider two stable instances generated by $RepairedInst(I, \Sigma)$: The generalization operations $Generalize(C, I, e', \Sigma)$ and $Generalize_r(C, J, e')$ consist of removing blocking literals from C and C respectively. We have shown that the same literals are blocking over both the clauses. Therefore, $RepairedCls(C^*) = \{C_1^*, \dots, C_n^*\}$.

J_1 , which contains tuples $R_1(a, x_b), R_2(x_b, c), R_2(b'', c)$; and J_2 , which contains tuples $R_1(a, y_b), R_2(b', c), R_2(y_b, c)$. The bottom-clause C_1 over instance J_1 has the form

$$\begin{aligned} T(u) \leftarrow & L_1, \dots, L_{l-1}, \\ & R_1(a, x_b), R_2(x_b, c), R_2(b'', c), \\ & L_l, \dots, L_n, \end{aligned}$$

and the bottom-clause C_2 over instance J_2 has the form

$$\begin{aligned} T(u) \leftarrow & L_1, \dots, L_{l-1}, \\ & R_1(a, y_b), R_2(b', c), R_2(y_b, c), \\ & L_l, \dots, L_n, \end{aligned}$$

where $L_k, 1 \leq k \leq n$, is a literal.

We want to generalize C_1 to cover another training example e' . Let $G_{e'}$ be the ground bottom-clause for e' and $G'_{e'}$ be a repaired clause of $G_{e'}$. The literals in C_1 that are blocking will depend on the content of the ground bottom-clause $G'_{e'}$. Assume that the sets of literals $\{L'_1, \dots, L'_n\}$ in clause C and the set of literals $\{L_1, \dots, L_n\}$ in clauses C_1 and C_2 are equal. We consider the following cases for the literals that are not equal. The same cases apply when we want to generalize any other clause generated from a repaired instance, e.g., C_2 .

Case 1: $G'_{e'}$ contains the literals $R_1(a, x_b)$ and $R_2(x_b, c)$. In this case, $R_1(a, x_b)$ and $R_2(x_b, c)$ are *not* blocking literals, i.e., they are not removed from C_1 . $G_{e'}$ also contains literals $R_1(a, b), R_2(b', c), V(b, x_b), V(b', x_{b'}), x_b = x_{b'}$. Therefore, the same literals are *not* blocking literals in C either.

Case 2: $G'_{e'}$ contains literals with same relation names but not the same pattern. Assume that $G'_{e'}$ contains the literals $R_1(a, b)$ and $R_2(d, c)$, i.e., they do not join. In this case, literal $R_2(x_b, c)$ in C_1 is a blocking literal because it joins with a literal that appears previously in the clause, $R_1(a, x_b)$. Hence, it is removed. $G_{e'}$ also contains literals $R_1(a, b)$ and $R_2(d, c)$. Because in clause $G'_{e'}$, created from the repaired instance, these literals do not join, in $G_{e'}$ they do not join either. In this case, the blocking literals in C are $V(b, x_b), V(b', x_{b'}), x_b = x_{b'}, R_2(b', c)$.

Case 3: $G'_{e'}$ contains $R_1(a, x_b)$, but not $R_2(x_b, c)$. In this case, literal $R_2(x_b, c)$ is a blocking literal in C_1 . Therefore, it is removed. $G_{e'}$ also contains literals $R_1(a, b)$ and $V(b, x_b), V(b', x_{b'}), x_b = x_{b'}$, but not $R_2(b', c)$. Therefore, literal $R_2(b', c)$ in C is also blocking and it is removed.

Case 4: $G'_{e'}$ contains $R_2(x_b, c)$, but not $R_1(a, x_{b'})$. This case is similar to the previous case.

Case 5: $G'_{e'}$ contains neither $R_1(a, x_b)$ nor $R_2(x_b, c)$. In this case, both $R_1(a, x_b)$ and $R_2(x_b, c)$ are blocking; hence they are removed. $G_{e'}$ does not contain literals $R_1(a, b), R_2(b', c), V(b, x_b), V(b', x_{b'}), x_b = x_{b'}$. Hence, these literals are also blocking literals in C and are removed.