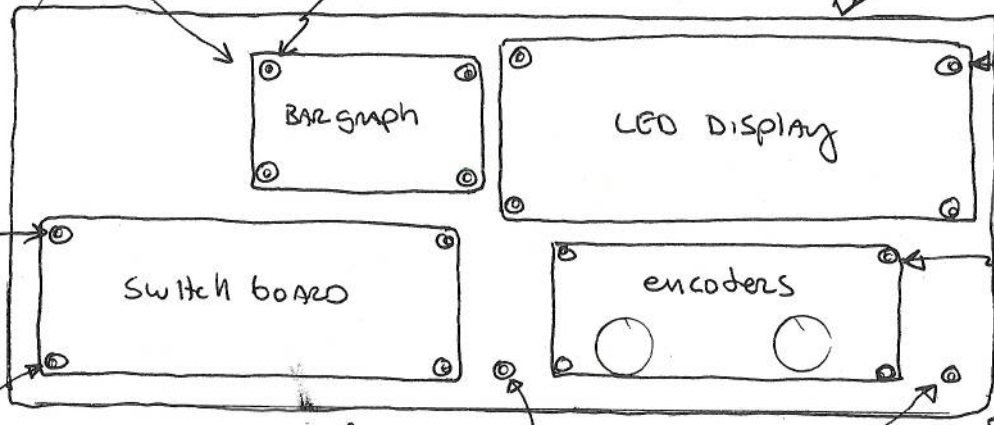
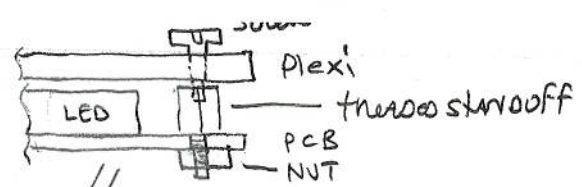


BACK SIDE MOUNT

- 4-40 x 1/2 screws (4)
- .115 washer (4)
- 4-40 nuts (4)



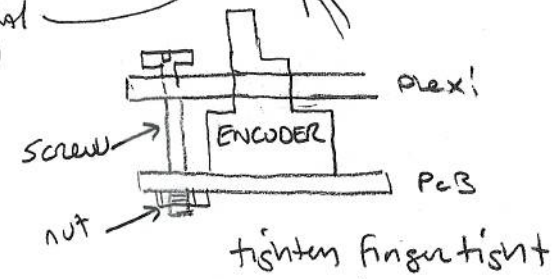
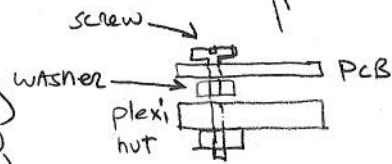
- 1/4", 4-40 threaded standoff (4)
- 4-40 x 1/4 screws (4)
- 4-40 nuts (4)
- MOUNT ON BACK SIDE

- 4-40 x 1/2" screws
- .115 washers
- 4-40 nuts
- FRONT SIDE MOUNT

- 4-40 x 3/4 (4) (cut off if too long)
- .115 washers (4)
- 4-40 nuts (4)
- MOUNT ON BACK SIDE

4-40 x 1/2 screw
(metal screw)
OR nylon

4-40 x 1/4 metal (2)



- 4-40 x 3/4 screws (4)
- 4-40 x 1/2 screws (8)
- 4-40 x 1/4 screws (4)
- 4-40 nuts (15)
- .115 washers (12)
- 4-40 x 1/4 standoff (4)